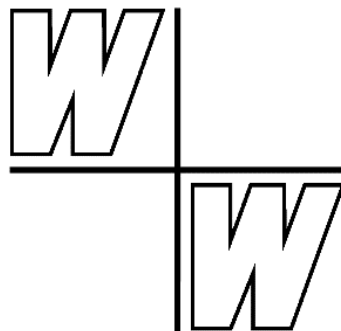


Data Collection on Intergeneric Hybrids
and Basic Types
ANGIOSPERMAE
Asteraceae
sunflower family = Korbblütler

Herfried Kutzelnigg
with the assistance of Benjamin Scholl
01.07.2026



Studiengemeinschaft Wort und Wissen
<https://www.wort-und-wissen.org/artikel/data-collection-basic-types/>

ANGIOSPERMAE: Asteraceae

16 subfamilies, 26 tribes, 1620 genera, 25.000 species

Summary:

125 intergeneric hybrids (incl. IST, IT)

5 preliminary basic types.

(2 subtribes, 2 tribes, 1 subfamily)

Average species number per basic type: $3977 / 5 = 795$ species.

Asteraceae subfam. Asteroideae tribe Anthemideae 115: 1800. **26 IG**

Asteraceae subfam. Asteroideae tribe Gnaphalieae 180: 200. **18 IG**

Asteraceae subfam. Asteroideae Madiieae subtribe Madiinae 24: 160. **18 IG**

Asteraceae subfam. Asteroideae Perityleae subtribe Peritylinae 4: 17. **3 IG**

Asteraceae subfam. Cichorioideae 100: 1800. **10 IG**

Abbreviations:

° = taxa actually not accepted in the rank of a genus, e. g. *Cerasus*° (= *Prunus* p. p.)

“ “ = the name of the genus is accepted, but the species concerned have meanwhile been placed in a different genus

10: 50 etc. The numbers behind the names of families etc. refer to extant genera and species

IS = interspecific hybrid. IG = intergeneric hybrid. IST = intersubtribal hybrid.

IT = intertribal hybrid. ISF = intersubfamilial hybrid.

nat. hyb. = natural hybrid. art. hyb. = artificial hybrid.

HY = assumed intergeneric hybridogeneous origin of a taxon.

IK = Index Kewensis (now part of IPNI). IPNI = International Plant Names Index.

POWO = Plants of the World Online.

Colours within the crosses:

Red letters: intergeneric hybrids.

Violet letters: plurigeneric hybrids.

Gray letters: hybridity unconfirmed or erroneous.

Green letters: notes on the tribes, subfamilies etc. involved in the hybridization.

Yellow shaded: notes concerning basic types.

Asteraceae = Compositae (Asterales) 1.620: 25.000.

sunflower family = Korbblütler

AP website 2025: 16 subfamilies, 32 tribes. CGD 2025: 14 subfamilies):

Asteroideae 1135: 17200, Barnadesioideae 9: 92, Carduoideae 83: 2864, Cichorioideae 224: 4000, (Corymbioideae 1: 7), Famatianthoideae 1: 1, Gochnatioideae 8: 85, Gymnarrhenioideae 2: 2, Hecastocleidoideae 1: 1, Mutisioideae 46: 637, Pertyoideae 5–6: 70, Stifftioideae 10: 35, (Tarhonanthoideae 2: 20). Vernonioideae 160: 1932, Wunderlichioideae 8: 48.

Hegi 6/3 (1979) WAGENITZ p. XV and XIX citing BENTHAM 1873a „the Compositae are at once the largest, the most distinct, and the most uniform, and therefore the most natural of all orders of Phanerogamous plants.“

Asteroideae 1135: 17.200.

AP website 22 tribes. CGD 30 tribes

According to Watson et al. (2020) tribes Anthemideae, Astereae, Calenduleae, Gnaphalieae, and Senecioneae form one of two enormous clades within subfamily Asteroideae.

Anthemideae 115: 1800. 18 IG + 6 IST.

14 subtribes 115: 1800. CGD 267 genera. AP website 2025 without details. Subtribes and genera according to Oberprieler et al. 2022, from de.wikipedia 2025):

Anthemidinae 6 *Anthemis* 210, *Cota* 40, *Hippolytia* 16, *Tanacetum* 150 (incl. *Pyrethrum*), *Tripleurospermum* 60, ...

Athanasiniinae 6: 8

Artemisiinae 20 *Ajania* 29 (Artemisiinae 1 in the figure below), *Arctanthemum* 2, *Artemisia* 500, *Chrysanthemum* 39, *Crossostephium* 3, *Elachanthemum* 1, *Leucanthemella* 2, *Nipponanthemum* 1, *Opisthopappus* (accepted by Oberprieler et al. 2022), *Stilpnolepis* 1, ...

Cotulinae 10: 120 *Cotula* 50, ...

Glebionidinae 4: 30 *Argyranthemum* 24, *Glebionis* 2, *Heteranthemis* 2. *Ismelia* 1.

Handeliinae 10

Leucantheminae 8 *Leucanthemum* 33, *Rhodanthemum* 15, ...

Leucanthemopsidinae 4: 12

Matricariinae 5 *Achillea* 150 (50 IS), *Anacyclus* 12, *Matricaria*, ...

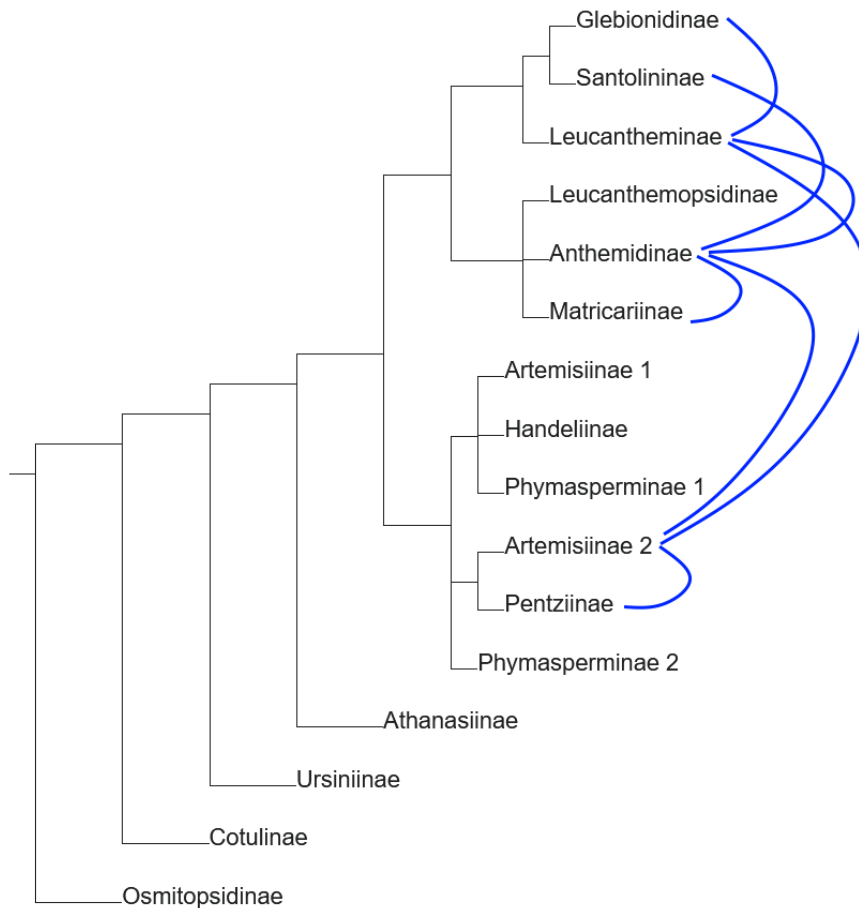
Osmitopsidinae 1: 9.

Pentziinae 8 *Pentzia* 23, ...

Santolininae 5 *Chamaemelum* 2, *Santolina* 10, ...

Ursiniinae 1: 39.

Probably **basic type Asteraceae Asteroideae tribe Anthemideae** (115: 1800) due to 7 intersubtribal hybrids, connecting 8 of the 16 subtribes. No connections by hybridization are currently known with the 4 very small basal subtribes (18: 250) of the Oberprieler et al. classification, see the figure below.



Asteroidae Anthemideae: hybrids in a simplified phylogeny after data of Oberprieler et al. 2022 (<https://refubium.fu-berlin.de/handle/fub188/35301>), from it.wikipedia 2025, CC BY 4.0.

Achillea × „*Chrysanthemum*” (= *Anthemis*, *Tanacetum*) (→ × *Chrysanthemoachillea*^o Prodan ex E. I. Nydr. 1964 in Savul. Fl. Reipubl. Popul. Roman. 9, 408) IK 1970 (2 nat. hyb.: *Achillea setacea* × “*Anthemis millefolia*” (= „*Chrysanthemum millefoliatum* L.”, *Tanacetum millefolium* (L.) Tzvelev] → × *Chr. borzai*; *Achillea pannonica* × *Anthemis millefolia* → × *Chr. carmen-sylvae*), Knobloch 1972, Stace 1975, cf. McKenzie 2001, POWO 2025: unplaced. At least the first nothospecies is now part of *Achillea*.

Ajania (= *Chrysanthemum*) × *Chrysanthemum* (= *Dendranthema*^o) **Artemisiinae** (art. hyb.) Abd El-Twab et al. 1999, Abd El-Twab & Kondo 2007a (*A. remotipinna* × *D. lavandulifolia*, *chanetii*), Deng et al. 2010 (*A. przwalskii* × *D. grandiflorum*)

Anthemis × *Chamomilla*^o (= *Matricaria*) (→ × *Anthechamomilla*^o Rauschert 1974 in Folia Geobot. Phytotax. 9, 258) IK 1981 → see *Anthemis* × *Matricaria*

Anthemis × *Cota* (= *Anthemis p. p.*) **Anthemidinae** (→ × *Cotanthemis* Smejkal) (nat. hyb.: *A. arvensis* × *C. tinctoria*, *A. cotula* × *C. tinctoria*, *A. austriaca* × *C. tinctoria*), cf. McKenzie 2001, POWO 2025

Anthemis cotula × „*Chrysanthemum maritimum agreste*” (→ × *Anthechrysanthemum* Domin 1935 in Preslia 13–15, 233) IK 1938 → see *Anthemis* × *Tripleurospermum*

Anthemis × *Chamaemelum* **IST Anthemidinae** × **Santolininae** Mitsuoka & Ehrendorfer 1972 (art. hyb.)

Anthemis × *Matricaria* **IST Anthemidinae** × **Matricariinae** (→ × *Anthematricaria* Asch. 1892 = × *Anthechamomilla*^o) (*A. cotula* × *M. chamomilla*) IK 1933, POWO 2025; see also *Anthemis* × *Tripleurospermum*

Anthemis arvensis, *cotula* × *Tripleurospermum inodorum*, *maritimum*, *perforatum* (= “*Matricaria*” *inodora* = “*Chrysanthemum*” *maritimum*) **Anthemidinae** (→

- × *Anthepleurospermum* Rothm. 1963 in Exkursionsflora von Deutschland IV: 324; =
 × *Tripleurothemis*° C. A. Stace 1990 in *Watsonia* 18, 212 = × *Anthemimatricaria*° 1928 P. Fournier in *Fl. Compl. Plaine Franc.* 273; = × *Anthechrysanthemum*° Domin 1935 in *Preslia* 13–15, 233; see also *Anthemis* × *Matricaria*) Geisenheyner 1890, Knobloch 1972, IK 1991, Stace 1995, POWO 2025
- Arctanthemum* × *Chrysanthemum* (= *Dendranthema*°) *Artemisiinae* Boase et al. 1997
- Argyranthemum frutescens* × *Glebionis coronaria* *Glebionidinae* (→ × *Glebianthemum* J. M. Watson & A. R. Flores) EC Ohtsuka & Inaba 2008, <http://www.freepatentsonline.com/20120192307.pdf>, POWO 2025
- Argyranthemum* × *Ismelia carinata* = *versicolor* *Glebionidinae* (→ × *Argyrimedia* J. M. H. Shaw 2018 (art. hyb.) <http://www.freepatentsonline.com/20120192307.pdf>, POWO 2025
- Argyranthemum* × *Rhodanthemum* Muto et al. 2020 *IST* *Glebionidinae* × *Leucantheminae* (*A. frutescens* × *R. gayanum*)
- Artemisia sieversiana* × *Chrysanthemum* (= *Dendranthema*°) *grandiflorum* *Artemisiinae* (somatic hybrid SO) Furuta et al. 2004 (electrofusion of mesophyll protoplasts), see also Deng et al. 2009, Zhu et al. 2014
- Artemisia* × *Chrysanthemum* (= *Dendranthema*°) *Artemisiinae* Deng et al. 2009 (EC, *A. vulgaris* × *C. morifolium*), Zhu et al. 2013 (*A. japonica* × *C. morifolium*), Zhu et al. 2014 (*A. vulgaris* × *C. morifolium*)
- Artemisia* × *Chrysanthemum* (= *Dendranthema*°) × *Crossostephium* *Artemisiinae* Deng et al. 2013 (trigeneric)
- Boltonia* × *Chrysanthemum* (= *Dendranthema*°) *IT* *Astereae* × *Anthemideae* (→ × *Chrysaboltonia* 1936/37 Arends in *Preis-Verzeichn.*: 6; et 1938 *Haupt-Verzeichn.*: 7; Heydenr. 1938 in *Gartenschönh.* 19: 55; cf. Sealy 1939 in *Bot. Mag. Lond.* 162 sub. t., 9566, in syn. *Chrysanthemum* × *rubellum*; = *Chrysanthemum chaneti*) IK 1947, Knobloch 1972, McKenzie 2001 → This taxon is now considered to belong to *Chrysanthemum zawadskii* = *rubellum* p. p., BCG 2025 (uncertain), POWO 2025
- Boltonia* × *Matricaria* *IT* *Astereae* × *Anthemideae* Willis 1985 → questionable
- Cancrinia maximowiczii* × *Chrysanthemum* *IT* *Handeliinae* × *Artemisiinae* Wu et al. 2015. unconfirmed
- Chamomilla*° (= *Matricaria*) × „*Matricaria*“ (= *Tripleurospermum*) (→ × *Matrichamomilla* Rauschert 1974 in *Folia Geobot. Phytotax.* 9, 258) IK 1981 → see *Matricaria* × *Tripleurospermum*
- “*Chrysanthemum*” (= *Glebionis*) × *Ismelia*° (= “*Chrysanthemum*” p. p. = *Glebionis*) → see *Glebionis* × *Ismelia*
- “*Chrysanthemum*” × *Matricaria* (→ × *Pseudomatricaria*° Domin 1935 in *Preslia* 13–15, 233; nomen invalid.) IK 1938, see *Matricaria recutita* × *Tripleurospermum perforatum*. POWO 2025 (accepted)
- Chrysanthemum* (= *Dendranthema*°) × *Crossostephium* *Artemisiinae* (art. hyb.) Tang et al. 2009, 2010 (*Chr. crassum* × *Cr. chinense*)
- Chrysanthemum morifolium* × *Leucanthemum* (= *Mauranthemum*) *paludosum* *IST* *Artemisiinae* × *Leucantheminae* Wang et al. 2014
- Chrysanthemum* (= *Dendranthema*°) *japonicum* × *Nipponanthemum nipponicum* *Artemisiinae* Abd El-Twab & Kondo 2006
- Chrysanthemum* (= *Dendranthema*°) *indicum, lavandulifolium* × *Opisthopappus* (= *Chrysanthemum*) *taihangensis* *Artemisiinae* (art. hyb.) Yang 2010, Tang et al. 2012
- Chrysanthemum* (= *Dendranthema*°) × *Rhodanthemum* *IST* *Artemisiinae* × *Leucantheminae* Odajima et al. 2004
- Chrysanthemum* (= *Dendranthema*°) × *Tanacetum* *IST* *Artemisiinae* × *Anthemidinae* (art. hyb.) Abd El-Twab & Kondo 2007 b (*C. horaimontanum* × *T. vulgare*), Kondo et al. 1999 (*C. japonicum* × *T. vulgare*), Tang et al. 2011 (EC; *C. nankingense* × *T. vulgare*)

- Cota* (= *Anthemis* p. p.) × *Tripleurospermum* **Anthemidinae** (→ × *Tripleurocota* Starm. 2005 Carinthia II 195/115 (2): 523) (nat. hyb.; art. hyb.: *Cota tinctoria* × *T. inodorum* IPNI 2008, POWO 2025)
- Elachanthemum* (= *Stilpnolepis* = *Artemisia* p. p.) *intricatum* × *Opisthopappus taihangensis* **Artemisiinae** Zheng et al. 2013
- Glebionis* (= “*Chrysanthemum*” p. p.) × *Ismelia* (= *Glebionis* p. p.) **Glebionidinae** Chaudhuri et al. 1976 (art. hyb. *G. coronaria* × *I. carinata*)
- Hippolytia* × *Nipponanthemum* **IST Anthemidinae** × **Artemisiinae** Hong et al. 2015 (*H. kaschgarica* × *N. nipponicum*)
- Leucanthemella* × *Nipponanthemum* **Artemisiinae** (*L. linearis* × *N. nipponicum*) Ogura & Kondo 1998, Abd El-Twab 2001
- Leucanthemum* × *Pyrethrum*^o (= *Tanacetum* p. p.) **IST Leucantheminae** × **Anthemidinae** (→ × *Leucantanacetum* Rauschert 1972 publ. 1973 in Feddes Repert. 83, 656) (*L. vulgare* × *T. corymbosum* → × *L. rohlenae*) = × *Leucopyrethrum*^o J. Dostál 1984 in Folia Mus. Rer. Nat. Bohem. Occid., Bot. 21, 13 IK 1981, IK 1987, POWO 2025
- Matricaria* × *Pentzia* **IST Matricariinae** × **Pentziinae** Mitsuoka & Ehrendorfer 1972 (art. hyb.)
Matricaria × *Tripleurospermum* **IST Matricariinae** × **Anthemidinae** (→ × *Pseudomatricaria*^o Domin 1935 in Preslia 13–15, 233; nomen invalid.; = × *Matrichamomilla*^o Rauschert 1973 Feddes Repert. 83: 655 <https://link.springer.com/article/10.1007/BF02853147>) (nat. hyb.: *M. recutita* = *chamomilla* × *T. inodorum* = „*Chrysanthemum maritimum agreste*”; art. hyb.: *M. recutita* × *T. tetragonospermum*) IK 1938, Knobloch 1972, cf. McKenzie 2001, POWO 2025 (unplaced), This hybrid is unconfirmed.

Astereae 250: 3000. **14 IG + 3 IST**

Part of supertribe Asterodae, together with Gnaphalieae.

Attempts for a subdivision of the tribe differ much. The taxonomy is not yet sufficiently resolved.

36 subtribes according to AP website 2025. They are listed e.g. de.wikipedia, e. g.:

Asterinae 13 *Aster* 180, *Callistephus* 1 *chinensis*, *Crinitaria* 13 (or included in *Galatella*),
Galatella 92 (**5 IS**) (incl. *Linisyris*^o; en.wikipedia places *Galatella* in Bellidinae!),
Heteropappus 20, *Kalimeris* (sometimes included in *Aster*), *Tripolium* 1, ...

Bellidinae 2 *Bellis*, *Bellium* 5.

Boltoniinae 3 *Boltonia*, ...

Chrysopsidinae 7: 70 *Chrysopsis* 11, *Heterotheca* 25, ...

Conyzinae 8 *Conyza* 80 (now often included in *Erigeron*), *Erigeron* 350 (incl. *Trimorpha*^o), ...

Hinterhuberinae 32 *Celmisia* 60, *Damnamentia* 1, *Olearia* 150 (incl. *Shawia*), *Pleurophyllum* 3,

...

Homochrominae 13 *Amellus* 13, *Chrysocoma* 20, *Felicia* 80, *Polyarrhena* 4, *Zyrphelis* 10, ...

Machaerantherinae 19 *Grindelia* 70, *Haplopappus* 70 (attention: many species once included in *Haplopappus* are now regarded as belonging to 30 other genera!), *Isocoma* 16,
Machaeranthera 2, *Rayjacksonia*, *Xanthisma*, *Xanthocephalum* 6, ...

Pentachaetinae 3 *Ericameria* 13 (subtribe uncertain), *Pentachaete* 6, *Rigiopappus* 1, *Tracyina* 1.

Solidagininae 27 *Bigelowia* 2, *Chrysoma* 1, *Chrysothamnus* 9, *Euthamia* 8, *Solidago* (incl. *Oligoneuron*^o), ...

Symphotrichinae 6 *Almutaster* 1, *Doellingeria* 3 (or own subtribe!), *Leucosyris* 9, *Psilactis* 6,
Symphotrichum 92 (**10 IS**), ...

In **Asteraceae Asteroideae** tribe **Astereae** (250: 3000) the number of **14 IG + 3 IST** in relation to 250 genera and 36 subtribes are insufficient to resolve the question of basic type. On the other hand, many common features and the conflicting attempts to divide the tribe suggest that the tribe might be a basic type.

Almutaster (= *Aster* p. p.) *pauciflorus* × *Machaeranthera arida, parviflora* **IST**
 Symphyotrichiinae × Machaerantherinae (2 art. hyb.: *A. pauciflorus* × *M. arida, parviflora*)
 Stucky 1978, Nesom 1994

Aster ageratoides × *Kalimeris incisa* **Asterinae** (nat. hyb., fertile) Tara 1977, 1978, Nesom 1994,
 Li 2006

Aster amellus × *Erigeron* **IST Asterinae** × **Conyzinae** (→ × *Asterigeron*° Rydberg 1917 Fl.
 Rocky Mts, 891; = × *Asterigeron*° Tzvelev 1994 in Fl. Evropeiskoi Chasti SSSR 7: 185,
 nomen illeg. = × *Asterron* Olshanskyi 2022) (*A. amellus* × *E. acris*) IK 1996, POWO 2025.
 "Aster" × *Erigeron* (→ × *Asterigeron*° *watsonii*) is no IG, but the species *Erigeron watsonii*

Aster × *Helianthus* **IT Astereae** × **Heliantheae** → very questionable Christov & Vassilevska-
 Ivanova 1999 (*Aster* ... × *H. annuus*)

"Aster" *ptarmicoides* (= *Solidago ptarmicoides* = *Oligoneuron album*) × *Solidago canadensis*
(IS) Solidagininae (→ × *Solidaster*° Wehrhahn 1932 in Bonstedt, Pareys Blumengärtnerei II,
 525 = × *Asterago*° Everett 1937 in Gard. Chron., Ser. III, 101, 6. This famous hybrid,
 spontaneously arisen in culture in 1910, is now often placed as an interspecific hybrid
Solidago × *lutea*, see also *Oligoneuron* × *Solidago*

Celmisia × *Olearia* (= *Shawia*) **(IS) Hinterhuberinae** (→ × *Celmearia* P. Heenan 1993 in
 Horticulture New Zealand 4, 2 = × *Shawmisia* Feng et al. 2024) Clarkson 1988, Heenan 1993,
 Nesom 1994, IK 1996, McKenzie 2001 (*C. gracilentia* × *O. arborescens*), Feng et al. 2024 (*O.*
arborescens has been shifted to *Shawia*), POWO 2025. The problem is that some authors
 place *Olearia arborescens* in a separate genus *Shawia* (see Feng et al. 2025), which is not
 generally accepted.

"*Chrysopsis berlandieri*" (= *Heterotheca canescens*) × *Heterotheca (subaxillaris subsp.)*
latifolia **IS Chrysopsidinae** (art. hyb.) Harms 1965, Knobloch 1972

Conyza × *Erigeron* **(IS) Conyzinae** (→ × *Conyzerigeron*° Rauschert 1972 publ. 25. April 1973 in
 Feddes Repert. 83, 656; = × *Conygeron*° Holub 1973 in Folia Geobot. Phytotax. 8, 156, 176)
 (nat. hyb.: *C. canadensis* × *E. acris*) Knobloch 1972, IK 1981, Stace 1995, POWO 2025
 (*Erigeron* IS).

Conyza° × *Trimorpha*° (= *Erigeron* p. p.) → see *Conyza* × *Erigeron*

"*Crinitaria*" (= "Aster p. p." = *Galatella* p. p.) × *Galatella*° (= *Aster* p. p.) **IS Asterinae** Nesom
 1994 (*Galatella villosa* × *Galatella* = *Linosyris*° *angustissima*)

Damnamentia vernicosa (= "*Celmisia*") × *Pleurophyllum* **Hinterhuberinae** (nat. hyb.) Given
 1973

Doellingeria (= *Aster* p. p.) × *Oclemena* (= *Aster* p. p.) **Symphyotrichinae** Gerdes 1998 (see
 Nesom 2001 a hybrid within *Oclemena* IS)

Ericameria albida (= "*Chrysothamnus*") × *Ericameria nauseosus* **IS Pentachaetinae** Anderson
 1970, Knobloch 1972

Ericameria albida (= "*Chrysothamnus*") × *Ericameria discoidea* (= "*Haplopappus*"
macronema) **IS Pentachaetinae** (→ *Ericameria* × *bolanderi*) (nat. hyb.) Anderson & Reveal
 1966, Roberts & Urbatsch 2003, POWO 2025 (*Ericameria* IS)

Erigeron × *Trimorpha*° (= *Erigeron* p. p.) **IS Conyzinae** Cronquist 1947

"*Euthamia*" × *Oligoneuron*, see *Oligoneuron* × *Solidago*

Galatella (= *Aster* p. p.) × *Linosyris*°, see *Crinitaria* × *Galatella*

Grindelia × "*Haplopappus*" (= *Rayjacksonia*) **Machaeranthinae** (art. hyb.: *G. papposa* × *R.*
annua) Nesom 1994

Grindelia × *Helianthus* **IT Machaeranthinae** × **Heliantheae** → very questionable Christov &
 Vassilevska-Ivanova 1999 (*G. speciosa* × *H. annuus*)

"*Haplopappus*" (= *Rayjacksonia*) × *Isocoma* **Machaeranthinae** (art. hyb.: *R. aurea* × *I. veneta*)
 Jackson & Dimas 1981, Nesom 1994

- “*Haplopappus*” (= *Rayjacksonia*) × “*Machaeranthera havardii*” (= *Xanthisma viscidium*)
Machaerantherinae Turner & Sanderson 1971 (nat. hyb.), Jackson 1966 (art. hyb.: *R. annua* × *M. havardii*), Jackson 1985 (art. hyb.: *R. aurea* × *M. arenaria*), see Cody 1978, Nesom 1994
- Heteropappus* (= *Aster* p. p.) × *Kalimeris* (= *Aster* p. p.) *indica Asterinae* (→ × *Heterokalimeris*^o)
 Kitamura 1939 in Acta Phytotax. & Geobot., Kyoto 8, 195) IK 1947, Knobloch 1972, Tara 1973, Nesom 1994, Willis 1985, McKenzie 2001 (2 nat. hyb.: *H. arenarius* × *K. yomena*, *H. hispidus* × *K. incisa*; 2 art. hyb.)
- Isocoma* (= “*Haplopappus*”) × *Xanthocephalum Machaerantherinae* Hartman & Lane 1991 (nat. hyb. Mexico: *I. veneta* × *X. humile*), Nesom 1994
- Machaeranthera* × *Leucosyris* (= “*Psilactis*”, *Machaeranthera* p. p.) *Machaerantherinae* (*M. tanacetifolia*, *tagetina* × *Leucosyris* (“*Psilactis*”) *coulteri*) Jackson 1962, Knobloch 1972, Jackson 1979
- Machaeranthera* × *Symphyotrichum* (= *Aster* p. p.) **IST** *Machaerantherinae* × *Symphyotrichinae* (art. hyb.: *M. riparia* × *S. tenuifolium*) Nesom 1994
- Oligoneuron* (= *Solidago* p. p.) × *Solidago* (**IS**) *Solidagininae* see “*Aster*” × *Solidago*
 Please note, that another 4 nat. hyb. of *Solidago* subgen. *Oligoneuron* are known (see WOPO 2025 sub *Oligoneuron*) which are intergeneric if one accepts *Oligoneuron* as a separate genus. IK 1938, IK 1947, Knobloch 1972, Willis 1985, Xiang & Sengh 1994, Schilling et al. 2008, POWO 2025
- Polyarrhena* × *Zyrphelis Homochrominae* (art. hyb.) Nesom 1994
- Rigiopappus* × *Tracyina Pentachaetinae* (art. hyb.: *R. leptocladus* × *T. rostrata*) Ornduff & Bohm 1975, Nesom 1994

Calenduleae 10: 120. **1 IG.**

Dimorphotheca 19, *Osteospermum* 45, *Tripteris*, ...

Dimorphotheca × *Osteospermum* <http://www.freepatentsonline.com/y2011/0247105.html>

Coreopsidaeae 30: 370. **1 IG.**

part of supertribe Helianthodae.

Often no subdivision, 3 subtribes in es.wikipedia.

Anacis (accepted by POWO 2025), *Bidens* 249, *Coreopsis* 75, *Cosmos*, *Dahlia* 4, ...

~~*Cosmos*~~ × *Dahlia* *Coreopsidinae*: According to Shaw 2015 in Phytoneuron 53: this putative hybrid very probably belongs to *Dahlia*.

Anacis × *Coreopsis* *Coreopsidinae* (→ × *Coreacis* H. N. Sun & Z.H. Feng 2024 Phytotaxa) POWO 2025

Eupatorieae 185: 2000. **1 IG + 2 IST.**

part of supertribe Helianthodae.

20 subtribes.

Ageratum, *Eupatorium* 42 (formerly 1200, now divided in many genera) (**4 IS**), *Hartwrightia* 1, *Koanophyllon* 120, *Liatris* 41, *Litrisa* 1 *carnosa*, *Pseudokyrsteniopsis* 1, *Stevia* 200, ...

Carterothamnus^o *anomalochaeta* (= *Hofmeisteria* p. p.) × *Hofmeisteria fasciculata* **IS**
Hofmeisteriinae Powell 1985 (art. hyb.)

Carphephorus × *Trilisa* **HY** *Liatrinae* Schilling 2011 (molecular data suggest that both *Litrisa carnosa* as well as *Hartwrightia floridana* are of hybrid origin)

Chromolaena × *Koanophyllon* **IST** **HY** *Praxelinae* × *Critoniinae* (→ *Osmiopsis*) Ribeiro et al. 2025 (nat. hyb. Hispaniola, supposed already since 1975)

Koanophyllon × *Pseudokyrsteniopsis* (= *Eupatorium* p. p.) **IST** **Critoniinae** × **Alomiinae** Powell 1985 (art. hyb., *K. solidaginifolium* × *P. perpetiolata*)

Gnaphalieae 180: 2000. **18 IG**

part of supertribe Asterodae, together with Astereae.

Attempts to subdivide the tribe are very contradictory. For details see Smitsen et al. 2020.

Anaphalis 110, *Anaphalioides* 7, *Antennaria*, *Argyrotegium* 4, *Cassinia* 20, *Euchiton* 17, *Ewartia* 4, *Ewartiothamnus* 1, *Filago* 12-46, *Gamochaeta* 50, *Gnaphalium* 150, *Helichrysum* 600, *Leontopodium* 60, *Leucogenes* 2, *Logfia* 3–12, *Lucilia* 8, *Micropus* 5, *Ozothamnus* 50, *Phagnalon* 40, *Pseudognaphalium* 60, *Psilocarphus* 5, *Psychrophyton* 10, *Raoulia* 26, *Relhania* 13, *Stoebe* 25, *Stylocline* 7, *Vellereophyton* 7, *Xerochrysum* 6, ...

Possibly **basic type Asteroideae** tribe **Gnaphalieae** (180: 200), due to 18 cases of intergeneric hybridization, many of them wide hybrids.

Anaphalioides bellidioides × *Euchiton* McKenzie 2001 (art. hyb.: *A. bellidioides* × *Euchiton*, Fig. 6.1, 7.1)

Anaphalioides bellidioides × “*Ewartia*” (= *Ewartiothamnus*) *sinclairii* (→ × *Antiothamnus* Feng et al. 2024) McKenzie 2001, McKenzie et al. 2004, 2008, 2015, Feng et al. 2024

Anaphalioides bellidioides × *Helichrysum lanceolatum* (→ × *Anrysum* Feng et al. 2024) (nat. hyb., New Zealand) Allan 1962, Jordan 1995, Breitwieser & Ward 2003, Feng et al. 2024

Anaphaliodes × *Leucogenes* (nat. hyb.) Falvey 1996, McKenzie 2001

Anaphaliodes × *Raoulia* Falvey 1996 (nat. hyb.), McKenzie 2001 (art. hyb.: *A. bellidioides* × *R. monroi*, *tenuicaulis*; photo p. 300)

Argyrotegium mackayi × *Leucogenes leontopodium* Smitsen et al. 2015 (nat. hyb. New Zealand, wide cross)

Cassinia aculeata × *Ozothamnus obeordatus* **Cassiniinae** (Orchard 2009 The suggested hybridization is discussed, and dismissed:

<https://www.researchgate.net/publication/248898194>

Euchiton × *Ewartia* McKenzie 2001 (art. hyb.: *Eu. audax* × *Ew. planchonii*, *sinclairii*; Fig. 6.1)

Euchiton × *Gamochaeta* McKenzie 2001 (art. hyb.: *E. audax* × *G. spicata*)

Euchiton × *Helichrysum* McKenzie 2001 p. 300 (art. hyb.: *E. cf. involucratus* × *H. intermedium*; photo)

Euchiton × *Leucogenes* Drury 1972 (nat. hyb., art. hyb.), McKenzie 2001 (art. hyb.; Fig. 6.1)

Euchiton × *Raoulia* McKenzie 2001 p. 300 (art. hyb.: *E. limosus* × *R. tenuicaulis*)

Filago × *Gnaphalium* Stace 1975 (nat. hyb. in France: „very doubtful”, *F. gallica* × *G. uliginosum*)

Filago × “*Logfia*” (= *Filago* p. p.) **IS** (→ × *Filfia* J. Holub 1998 in *Preslia* 70, 104 = →

× *Giflifa*^o Chrtek & Holub 1963 in *Preslia* 35, 12) (nat. hyb.: *F. vulgaris* = *germanica* × *L. arvensis* → *Filago mixta* Holuby), IPNI 2007 (*Filago* × *mixta*). Please note that the genus *Logfia* exists, but that *Logfia arvensis* is an obsolete synonym of *Filago arvensis*, and that the authors Holub and Holuby are not identical.

Gifola^o (= *Filago* p. p.) × *Oglifa*^o (= *Filago* p. p.) **IS** (nat. hyb.: *Filago vulgaris* = *germanica* × *F. arvensis*) IK 1970. This hybrid is identical with the former hybrid.

Gnaphalium × *Helichrysum* Cockayne & Allan 1934 (*G. trinerve* × *H. bellidioides*), Allan 1961, Allan 1962 (*G. cf. traversii* × *L. leontopodium*: hybridism probable, but unconfirmed), Molloy 1995

Helichrysum × *Leucogenes* Molloy 1995, McKenzie 2001 (art. hyb.; Fig. 6.1)

Helichrysum × *Raoulia* Brockie 1956 (*H. dimorphum* × *Raoulia* div. spec.), Allan 1961

Leucogenes × *Psychrophyton* McKenzie 2001 (art. hyb; fig. 7.1)

Leucogenes × *Raoulia* (→ × *Leucoraoulia* Cockayne & Allen 1928 in Cockayne Veg. New Zealand: 284) (*L. grandiceps*, *rubra* × *R. goyeni*, *bryoides*, *eximia*) Cockayne & Allan 1934, Allan 1962, Knobloch 1972, Molloy 1995, McKenzie 2001 (6 nat. hyb.), Breitwieser & Ward 2003, McKenzie et al. 2015, Feng et al. 2024

Psychrophyton × *Raoulia* McKenzie 2001 (art. hyb; fig. 7.1)

Helenieae 14

part of supertribe Helianthodae.

Heliantheae (excl. Coreopsidae, Helenieae, Madieae, Millerieae, Perityleae) 190: 2500. **7 IG + 2 IST** (Helianthinae – Verbesininae, Helianthinae – Zinniinae)

part of supertribe Helianthodae.

12 subtribes, e. g.:

Ambrosiinae 7 *Ambrosia* (incl. *Franseria*), ...

Ecliptinae 50 *Lipochaete* 20, *Melanthera* 3 (excl. species now placed in *Lipochaete* and *Wollastonia*), *Sphagneticola*, *Wedelia*, *Wollastonia* 8, ...

Enceliinae 5 *Encelia*, *Geraea*, ...

Engelmanniinae 9

Helianthinae 22 *Helianthus*, *Tithonia*, *Viguiera*, ...

Rudbeckiinae 2

Verbesininae 4 *Verbesina*, ...

Zinniinae 7 *Echinacea*, *Sanvitalia*, *Zinnia*, ...

Ambrosia artemisiifolia × *Franseria*^o (= *Ambrosia*) *acanthicarpa* Ambrosiinae Payne 1964

Bidens tripartita × *Helianthus annuus* Coreopsidinae × Helianthinae Christov & Vassilevska-Ivanova 1999 → very questionable

Carduus acanthoides × *Helianthus annuus* Cardueae × Heliantheae Hristova-Cherbadzhi (2020) → Not symmetric hybrids, obviously a transfer of genes could be observed.

Complaya^o *trilobata* × *Lipochaete* (“*Melanthera*”) *remyi* → *Lipochaete* × *Sphagneticola*

Echinacea × *Helianthus* **IST** Zinniinae × Helianthinae Vassilevska-Ivanova & Naidenova 2005, Vassilevska-Ivanova et al. 2013/2014, 2015 (*E. purpurea* × *H. annuus*)

Echinacea purpurea × *Rudbeckia hirta* **IST** Zinniinae × Rudbeckiinae (→ “× *Echibeckia*”) This cultivar (‘Summerina Orange’) has a patent number and is listed by the Missouri Botanical Garden (2024):

<https://www.missouribotanicalgarden.org/PlantFinder/PlantFinderDetails.aspx?taxonid=441833&isprofile=0&cv=5>, but according to the following URL it is thought to be a form of

Rudbeckia hirta: <https://www.greenhousegrower.com/crops/intergeneric-crosses-are-a-new-perennial-trend/> POWO 2025 (accepts × *Echinabeckia* 2019 M. H. J. van der Meer Cact. Phantast. (7)-1: 1)

Encelia farinosa, *frutescens* × *Geraea canescens* Enceliinae (nat. hyb.) Kyhos 1967, Knobloch 1972, Clark 1998 (*Geraea canescens* is annual, *Encelia* is a shrub!)

Gaillardia speciosa × *Helianthus annuus* **IST** Gaillardiinae × Helianthinae → very questionable Stace, Christov & Vassilevska-Ivanova 1999 (art. hyb.)

Helianthus annuus × *Matricaria recutita* = *chamomilla* **IT** Heliantheae × Anthemideae Christov & Vassilevska-Ivanova 1999 (art. hyb.) → very questionable

Helianthus annuus × *Onopordum acanthium* **ISF** Heliantheae × Cardueae Georgieva-Todorova 1971, Christov & Vassilevska-Ivanova 1999 (art. hyb.) → very questionable

Helianthus annuus × *Silphium perfoliatum* **IST** Helianthinae × Engelmanniinae Christov & Vassilevska-Ivanova 1999 (art. hyb.) → very questionable

Helianthus annuus × *Telekia speciosa* **IT** Heliantheae × Inuleae Christov & Vassilevska-Ivanova 1999 (art. hyb.) → very questionable

- Helianthus annuus* × *Tithonia rotundifolia* **Helianthinae** Heiser et al. 1969, Christov & Vassilevska-Ivanova 1999, Vassilevska-Ivanova et al. 1999 (art. hyb.), Gomez-Martinez et al. 2010
- Helianthus annuus* × *Verbesina helianthoides, alata* **IST Helianthinae × Verbesininae** Vassilevska-Ivanova et al. 1996, Christov & Vassilevska-Ivanova 1999, Vassilevska-Ivanova & Tcekova 2002, Vassilevska-Ivanova 2005
- Helianthus niveus, debilis* × *Viguiera (= Helianthus) porteri* **Helianthinae** Heiser 1963, Heiser et al. 1969, Knobloch 1972 (art. hyb.: 4 nothospecies)
- Lipochaete lobata* × *Lipochaete (= "Melanthera", "Wollastonia") integrifolia* **IS Ecliptinae** Carr 1997
- Lipochaete integrifolia* × *Sphagneticola (= Complaya^o) trifoliata* **Ecliptinae** Carr 1997
- Lipochaete* × *Wollastonia ("Wedelia") biflora* **Ecliptinae** Rabakonandrianina & Carr 1981 (several art. hyb.)
- Lipochaete ("Melanthera") micrantha* × *Wollastonia (= "Melanthera") biflora* **Ecliptinae** Carr 1997
- Tragoceros^o (Zinnia p. p.)* × *Zinnia (sect. Mendezia)* **IS Zinniinae** (art. hyb.) Olorode & Torres 1970

Inuleae 68

Part of supertribe Helianthodae.

Madieae 36: 235. **18 IG** (all in Madiinae).

Part of supertribe Helianthodae.

5 subtribes (after GCD 2022, from en.wikipedia):

Arnicinae 1: 32 *Arnica* 32.

Baeriinae 8: 36 *Amblyopappus*, *Baeriopsis*, *Constancea*, *Eriophyllum*, *Lasthenia*, *Monolopia*, *Pseudobahia*, *Syntrichopappus*.

Hulseinae 2: 8 *Eatonella*. *Hulsea*.

Madiinae 24: 160 *Achyrrachaena*, *Adenothamnus*, *Anisocarpus*, *Argyroxiphium*, *Blepharipappus*, *Blepharizonia*, *Calycadenia* (**12 IS**), *Carlquistia* 1 *muirii* (= *Raillardiopsis muirii*), *Centromadia*, *Deinandra*, *Dubautia* 39, *Harmonia*, *Hemizonella*, *Hemizonia*, *Holocarpa*, *Holozonia*, *Jensia*, *Kyhosia* 1 *bolanderi* (= *Madia bolanderi*), *Lagophylla*, *Layia*, *Madia* 10, *Osmadenia*, *Raillardella*, *Wilkesia*.

Venegasiinae 1: 1 *Venegasia*.

Basic type Asteraceae Asteroideae Madieae subtribe Madiinae (24: 160): all clades (with the exception of a basal clade with *Achyrrachaena* and *Blepharipappus*) are connected by **18 IG**, see the figure below. – Intensive studies of the radiation in the Hawaiian silversword alliance (*Argyroxiphium*, *Dubautia*, *Wilkesia*), deeply nested within the tribe, were presented by Crompton (2021, 2022, 2023).

Anisocarpus scabridus × *Carlquistia muirii* **Madiinae** Carr 2003 (art. hyb.)

Anisocarpus × *Madia* **Madiinae** Carr 2003 (art. hyb.)

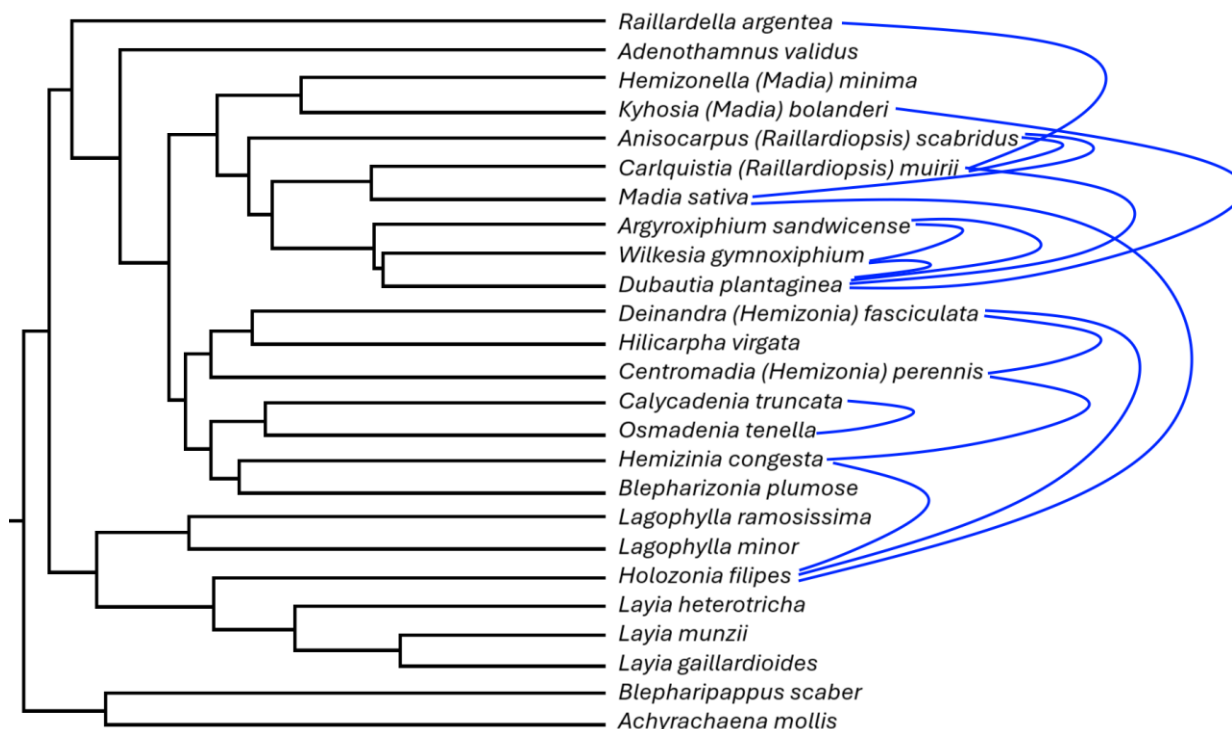
Argyroxiphium div. spec. × *Dubautia* div. spec. **Madiinae** (→ × *Argyrautia* Sherff 1944 in Amer. J. Bot. 31, 159) IK 1950, Knobloch 1972, Willis 1985, Carr 1995 (nat. hyb., fully fertile), Carr 2003, POWO 2025

Argyroxiphium div. spec. × *Wilkesia* div. spec. **Madiinae** Carr 1985 (art. hyb.), McKenzie 2001 (5 nat. hyb.), Carr 2003

Calycadenia mollis, villosa × *Osmadenia tenella* **Madiinae** Carr 2003 (art. hyb.)

Carlquistia muirii × *Dubautia laevigata* **Madiinae** Carr 2003 (*C. muirii* = *Raillardiopsis^o m.* × *D. laevigata*; art. hyb.)

- Carlquistia* × *Kyhosia* **Madiinae** Carr 2003 (*C. muirii* = *Raillardiopsis*° *m.* × *K. bolanderi* = “*Madia bolanderi*”; art. hyb.)
- Carlquistia* („*Raillardiopsis*”) × *Kyhosia* × *Dubautia* („*Madia*”) **Madiinae** Carr et al. 1996 (art. hyb., trigenetic, *C. muirii* × *K. bolanderi* × *D. scabra*)
- Carlquistia muirii* × *Raillardella prinlei* **Madiinae** Kyhos et al. 1990 Carr 2003 (art. hyb.)
- Centromadia* × *Deinandra* **Madiinae** Carr 2003 (nat. hyb.)
- Centromadia* × *Hemizonia* **Madiinae** Carr 2003 (art. hyb.)
- Deinandra* × *Holozonia* **Madiinae** Carr 2003 (art. hyb.)
- Dubautia* × *Kyhosia* **Madiinae** Carr 2003 ([*D. knudsenii* × *laxa*) × *K. bolanderi*; art. hyb.)
- Dubautia* × *Madia* **Madiinae** Baldwin et al. 1991, Carr et al. 1996, Carr 2003
- Dubautia* × *Raillardia*° (= *Dubautia p. p.*) **IS Madiinae** (→ × *Railliautia* Sherff 1935 in Bull. Bishop Mus., Honolulu, No. 135, p. 136, in obs. = *Dubautia* sect. *Raillardia*) IK 1938, Knobloch 1972, Willis 1985, Carr 2003, POWO 2025 (→ *Dubautia* IS)
- Dubautia laevigata* × *Raillardiopsis*° *muirii* **Madiinae** (art. hyb.) Carr et al. 1996, Carr 2003 → *Carlquistia* × *Dubautia*
- Dubautia* × *Wilkesia div. spec.* **Madiinae** Carr 1985 (art. hyb.), Carr 2003
- Harmonia* × *Madia* **Madiinae** Carr 2003 (art. hyb.)
- Harmonia* × *Jensia* **Madiinae** Carr 2003 (art. hyb.)
- Hemizonia arida* × *Holozonia filipes* **Madiinae** Clausen et al. 1937 (art. hyb.)
- Layia* × *Madia* **Madiinae** (art. hyb. + nat. hyb.) Clausen et al. 1937, Kyhos et al. 1990, Carr 2003
- Madia* × *Raillardiopsis*° (= *Carlquistia*) **Madiinae** Baldwin et al. 1991, Carr 2003 → see *Carlquistia* × *Madia*
- Raillardella* × *Raillardiopsis*° *muirii* → see *Carlquistia* × *Raillardella*



Asteraceae Asteroideae Madiaceae subtribe Madiinae: hybridization (selection) in the phylogeny according to Baldwin (2003. <https://www.researchgate.net/publication/313631867>).

Milleriaceae 33

part of supertribe Helianthodae.

8 subtribes (after GCD 2022, from en.wikipedia 2025), e. g.

Espeletiinae 4: 200 *Espeletia* 159 (19 IS), ...

Galinsoginae 12: 87.

Espeletia spec. × *Libanothamnus*^o *neriifolius* (= *Espeletia*) *neriifolia* IS **Espeletiinae** (→ *Espeletiopsis*^o (= *Espeletia*) *meridensis*) Diazgranados 2012 (this taxon is possibly of hybridogeneous origin, „however, more material is needed to confirm this hypothesis.”)
Carramboa^o (= *Espeletia*) *badilloi* × *Ruilopezia*^o (= *Espeletia*) *marcescens* IS **Espeletiinae** (→ *Espeletiopsis* (= *Espeletia*) *tachirensis*) Diazgranados 2012 (the author confirms the supposed hybridogeneous origin of this taxon)
Galinsoga quadriradiata × *Sabazia sarmentosa* **Galinsoginae** Canne 1977 (putative nat. hyb. Mexico, cited after Warwick & Sweet 1983)

Neurolaeneae 8

part of supertribe Helianthodae.

Perityleae 7: 24. **3 IG** (all in Peritylinae)

3 subtribes (after en.wikipedia):

Galeaninae 2: 6,

Lycapsinae 1: 1,

Peritylinae 4: 17 *Amauria* 4 (partly included in *Perityle*), *Eutetras* 2, *Pericome* 2, *Perityle* 9.

All 4 genera of **Asteroideae** **Perityleae** subtribe **Peritylinae** (4: 17) are connected by hybridization and thus belong to the same basic type.

Amauria × *Perityle* **Peritylinae** Powell 1972

Eutetras × *Perityle* **Peritylinae** Powell 1972

Pappothrix^o (= *Perityle* p. p.) × *Perityle* IS **Peritylinae** see Powell 1985

Pericome × *Perityle* **Peritylinae** Powell 1972

Polymnieae 1: 8.

part of supertribe Helianthodae.

Senecioneae 150: 3.500. **5 IG.**

en.wikipedia genera according to GCD 2022, no subtribes!

Doronicum is sometimes separated as its own tribe.

Pelser et al. (cited in en.wikipedia 2025 for *Senecio*) write: “As of 2007, many genera and the whole tribe were in need of revision. Many species currently placed in the genus need to be transferred to other or new genera, and others have been retransferred to *Senecio*. In its new delimitation the genus is still not monophyletic”.

IS according to POWO 2025: *Cineraria* 0 IS, *Culcitium* 0 IS, *Curio* 0 IS, *Jacobaea* 7 IS, *Kleinia* 0 IS, *Senecio* 18 IS,

Baculellum 1 *articulatum* (in 2017 separated from *Curio*), *Cineraria* 20, *Culcitium* 17, *Curio* 20 (formerly part of *Senecio*), *Jacobaea* 45 (7 IS), *Kleinia* 40, *Ligularia* 140, *Othonna* 120, *Parasenecio* 70, *Petasites*, *Senecio* 1500 (excl. *Curio*) (18 IS), *Tussilago* 1, ...

The dominant genus of **Asteroideae** tribe **Senecioneae** is ***Senecio***, one of the largest genera of plants, and near allies, exhibiting an extremely wide range of life forms and morphological differences. All these species seem to belong to the same basic type with about 2000 species or more, but further research is needed.

Baculellum articulatum × *Curio* (→ × *Bacurio* Gideon F. Sm. & Figueiredo) (first publ. 2017, the monotypic *B. articulatum* was formerly placed in *Cacalia*, *Curio*, *Kleinia*, *Senecio*) (*B. art.* × *Curio rowleyanus* → × *Bacurio delphinatifolius* = × *Senecurio* (Gideon F. Sm. & Figueiredo) J. M. H. Shaw 2022 = *Kleinia* × *peregrina* 1988) POWO 2025

Cacalia^o × *Senecillis*^o → see *Ligularia* × *Parasenecio*

Cineraria (= *Senecio* p. p.) × *Jacobaea* (= *Senecio* p. p.) (→ × *Jacoraria*^o P. V. Heath in *Calyx* 6 (2): 55) IK 1999, POWO 2025 (unplaced → *Jacobaea* × *albescens*)

Cremanthodium × *Ligularia* (*L. nelumbifolia* × *C. stenoglossum*) (nat. hyb.) Ning et al. 2019, Hu et al. 2021

Culcitium (= *Senecio* p. p.) × *Lasiocephalus*^o (= *Senecio* p. p.) (Andes; putative) Rejzková et al. 2009, Duskova et al. 2010

Curio × *Senecio* (→ × *Senecurio* Gideon F. Sm. & Figueiredo 2020 *Phytotaxa* 464, 185 <https://doi.org/10.11646/phytotaxa.464.2.6> “As comprehensively argued by Ozerova et al. (2017), commonly cultivated South African material widely known as *Senecio kleiniiformis* Suessenguth represents an intergeneric hybrid derived from a species of *Curio* Heath (1997: 136) and *Senecio tropaeolifolius*”), POWO 2025

Jacobaea (= *Senecio* p. p.) × *Senecio* (→ × *Jaconecio*^o P. V. Heath in *Calyx* 6 (2): 55) IK 1999, Calvo et al. 2013 („One of the two *J. kirghisica* specimens that were sequenced contains ITS copies that are most closely related to those of sect. *Crociseris* as well as copies that nest among ITS accessions of *Jacobaea*. This suggests intergeneric hybridization between *Senecio* and *Jacobaea*“), POWO 2025 (unplaced → *Senecio cambrensis*)

Ligularia × *Japonicalia* (→ × *Ligonicalia* Feng et al. 2024)

Ligularia × *Parasenecio* (→ × *Parasenaria* J. M. H. Shaw 2008 *Hanburyana* 3: 15 = × *Liguparasenecio* H. Ohashi & K. Ohashi 2008 *J. Jap. Bot.* 83 (2): 113) (nat. hyb.: *L. fisheri* × *P. delphiniifolia*) McKenzie 2001, IPNI 2011, POWO 2025

Tageteae 28: 216.

part of supertribe Helianthodae.
no subtribes (2025).

Flaveria 21, *Haploesthes* 3, *Pectis* 90, *Sartwellia* 3, *Tagetes* 50, ...

Flaveria × *Haploesthes* Powell 1978

Flaveria × *Sartwellia* Powell 1978

Haploesthes × *Sartwellia* Powell 1978

Tagetes erecta × *Zinnia elegans* IT *Tageteae* × *Heliantheae* *Zinniinae*

<https://patents.justia.com/patent/20180343817> (2017)

Carduoideae 81: 2600.

AP website 2025: no subdivision; but 4 tribes in en.wikipedia 2025:

Cardueae 72, Dicomeae 7: 120, Oldenburgieae 1: 4, Tarchonantheae 3: 17.

Cynareae (=Cardueae) 72: 2500. **4 IG** (Carduinae 2 IG, Centaureinae 2 IG).

Attempts to subdivide the tribe differ much. For practical reasons we use the classical subdivision in 5 tribes:

Cardopatiinae 2 *Cardopatum*, *Cousiniopsis*.

Carduinae (incl. Onopordinae) 29 *Arctium*, *Carduus* 100, *Cirsium* 500 (incl. *Lophiolepis* or *Lophiolepis* separated), *Cousinia*, *Cynara*, *Galactites*, *Notobasis*, *Onopordum*, *Xeranthemum*,

...

Carlinae 5 *Atractylis* 22, *Carlina* 28, ...

Centaureinae 30: *Carthamus* 20, *Centaurea* 300 (formerly 700; incl. *Acosta*^o, *Calcitrapa*^o, *Cnicus*^o, *Colymbada*^o, *Cyanus*^o, *Jacea*^o, POWO: 60 IS), *Psephellus* 90 (incl. *Aethiopappus*^o; formerly part of *Centaurea*), *Serratula* 2, ...

Echinopinae 1: *Echinops* 120, ...

Acosta^o (= *Centaurea* p. p.) × *Calcitrapa*^o (= *Centaurea* p. p.) IS **Centaureinae** (→ × *Acostitrapa*^o Rauschert 1972 publ. 1973 in Feddes Repert. 83, 655) (3 nat. hyb.) IK 1981, POWO 2025 (= *Centaurea* IS, 3 nothospecies)

Acosta^o (= *Centaurea* p. p.) × *Colymbada*^o (= *Centaurea* p. p.) IS **Centaureinae** (→ × *Colymbacosta*^o Rauschert 1972 publ. 1973 in Feddes Repert. 83, 656) (nat. hyb.: *A. stoebe* × *C. scabiosa*) IK 1981

Acosta^o *diffusa* (= *Centaurea* p. p.) × *Jacea*^o (= *Centaurea* p. p.) *margarita-alba* IS **Centaureinae** (→ × *Jaceacosta*^o Rauschert 1972 publ. 1973 in Feddes Repert. 83, 655) (5 nat. hyb.) IK 1981, Czerepanov 1995 (nat. hyb. in Eastern Europe), cf. McKenzie 2001. POWO 2025 (= *Centaurea* IS, 5 nothospecies)

Calcitrapa^o (= *Centaurea* p. p.) × *Colymbada*^o (= *Centaurea* p. p.) IS **Centaureinae** (→ × *Calcitrymbada*^o Smejkal (nat. hyb.: *Ca. solstitialis* × *Co. scabiosa*) McKenzie 2001

Calcitrapa^o (= *Centaurea* p. p.) × *Jacea*^o (= *Centaurea* p. p.) IS **Centaureinae** (→ × *Jaceitrapa*^o Rauschert 1972 publ. 1973 in Feddes Repert. 83, 656 (nat. hyb.: *C. solstitialis* × *J. pratensis*, *C. stellata* × *J. pseudophrygia*, *C. iberica* × *J. salicifolia*) IK 1981, Czerepanov 1995 (nat. hyb. in Caucasus), McKenzie 2001

Carduus × *Cirsium* **Carduinae** (→ × *Cirsiocarduus* 1928 P. Fournier in Fl. Compl. Plaine Franc. 277 = × *Carduocirsium*^o Sennen 1931 in Le Monde des Plantes 32, 19, in obs.; confer × *Carduocirsium borderei* (Rouy) 1940 P. Fournier in Quatre Fl. France, 1004: *Carduus borderei*) IK 1933, IK 1938, IK 1950, Knobloch 1972, Willis 1985, McKenzie 2001 (ca. 10 nat. hyb.) <http://www2.dijon.inra.fr/flore-france/car.htm>, POWO 2025

Carduus × *Galactites* **Carduinae** (→ × *Carduogalactites* 1940 P. Fournier Quatre Fl. France, 1001) (*C. pycnocephalus* × *G. elegans* = *tomentosus*) IK 1950, Knobloch 1972, <http://www2.dijon.inra.fr/flore-france/car.htm>. POWO 2025

Carduus × *Lophiolepis* (= *Carduus*) IS **Carduinae** (→ × *Lophioluus* Feng et al. 2024 (*C. uncinatus* × *L. turkestanica*))

Carduus acanthoides × *Helianthus annuus* IT **Cardueae** × **Heliantheae** → very questionable Christov & Vassilevska-Ivanova 1999

Carthamus tinctorius × *Helianthus* IT **Cardueae** × **Heliantheae** Morozow 1947 very questionable

Centaurea × *Psephellus* (= *Aethiopappus*^o) **Centaureinae** (→ × *Centaureopappus*^o Heydt; cf. × *Centaureopappus*^o *hybridus* 1932 hort. ex Möllers, Deutsch. Gärtner-Zeit. 47, 166) IK 1938, Knobloch 1972, POWO 2025 (unplaced)

Centaurea × *Serratula* **Centaureinae** (→ × *Centauserratula* Arènes 1952 in Notul. Syst. (Paris) 14, 188) (nat. hyb.: *C. pygmaea* × *S. cerinthefolia* → *Serratula* × *mouterdei*) IK 1959, Knobloch 1972, Dittrich 1981, Willis 1985

Cirsium vulgare × *Lophiolepis* (= *Cirsium* p. p.) IS **HY Carduinae** (→ × *Lophiocirsium* Del Guacchio, Bureš, Iamónico & P. Caputo 2022) Bureš et al. 2024 (*Cirsium vulgare* is of intergeneric origin *Cirsium* × *Lophiolepis*), POWO 2025 (→ *Cirsium* IS)

Colymbada^o (= *Centaurea* p. p.) × *Jacea*^o (= *Centaurea* p. p.) IS **Centaureinae** (→ × *Colycea*^o J. Fernandez Casas & Susanna 1982 in Fontqueria 2: 21) (nat. hyb.) IK 1991, POWO 2025

Cichorioideae 100: 1800.

Only 1 tribe (AP website 2025)

Cichorieae 100: 1800. **6 IG + 4 IST** (Crepidinae – Lactucinae, Hyoseridinae – Hypochaeridinae)

11 subtribes:

Chondrillinae 3 *Chondrilla* 30, *Phitosia*, *Willemetia* 2.

Cichoriinae 6: *Arnoseris* 1, *Cichorium* 6, *Tolpis* 20, ...

Crepidinae 22: *Crepidiastrum* 18, *Crepis* 200, *Faberia* 7, *Ixeris* 15, *Lapsana* 1, *Mojiangia* 1, *Taraxacum* 700 + apomictic species, *Youngia* 30, ...

Hieraciinae 5 *Andryala*, *Hieracium* 500 + apomictic species, *Pilosella* 110 + apomictic species (often included in *Hieracium*), ...

Hyoseridinae 5 *Reichardia*, *Sonchus* (incl. *Lactucosonchus*^o), ...

Hypochaeridinae 8 *Hypochaeris* 60, *Leontodon* 40 (incl. *Hedypnois*^o), *Picris*, *Prenanthes*, *Scorzoneroides* 26, *Urospermum* 2, ...

Lactucinae 3–4 *Cicerbita* 20 (some species included in *Lactuca* by some authors), *Lactuca* 60, *Mycelis*, *Notoseris*, ...

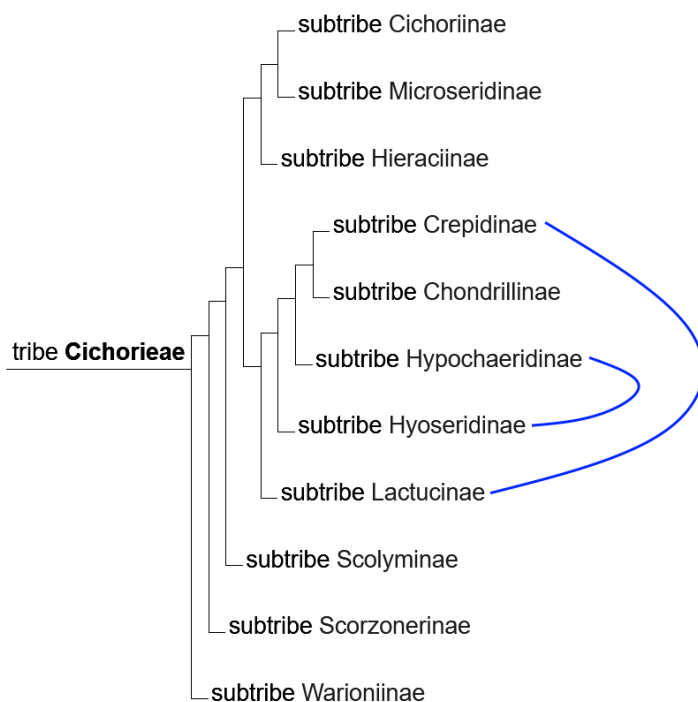
Microseridinae 22 *Microseris* 14, *Uropappus* 1, ...

Scolyminae 4 *Scolymus* 3, ...

Scorzonerinae 14 *Podospermum* 17, *Scorzonera* 120, ...

Warioniinae

Possibly **basic type Asteraceae subfam. Cichorioideae** (100: 1800): Only one uniform tribe exists, 2 intersubtribal hybrids connect 5 of the 11 subtribes (see the figure below).



Cichorioideae Cichorieae: intersubtribal hybrids in a simplified phylogeny of Kilian et al. in Funk et al. 2016 (https://www.bgbm.org/sites/default/files/documents/Cichorieae_Chapter24.pdf), after en.wikipedia 2025, CC BY 4.0

Andryala × *Pilosella* **Hieraciinae HY** Fehrer et al. 2007 (molecular data suggest “two intergeneric hybridization events between ancestral lineages that resulted in cytoplasmic transfer (from *Hieracium/Chionoracium* to *Pilosella*, and from the introgressed *Pilosella* lineage to *Andryala*))

Crepidiastrum platyphyllum × *Lactuca squarrosa* **IST** Crepidinae × Lactucinae Ono 1955, Knobloch 1972, Ohashi & Ohashi 2007

- Crepidiastrum platyphyllum* × *Paraixeris*^o *denticulata* (= *Crepidiastrum denticulatum*) **IS** **Crepidinae** (→ × *Crepidiastrixeris*^o Kitamura 1937 Acta Phytotax. Geobot. 6: 235) (3 nat. hyb.) Knobloch 1972, McKenzie 2001, Saito et al. 2006, Ohashi & Ohashi 2007, POWO 2025 (→ *Crepidiastrum* IS)
- Crepidiastrum* × *Youngia* **Crepidinae** Knobloch 1972, Ohashi & Ohashi 2007
- ~~*Crepis* × *Hieracium*~~ **IS** **Crepidinae** × **Hieraciinae** (→ × *Crepihieracium* 1928 P. Fournier Fl. Compl. Plaine Franc. 316) *C. praemorsa* × *H. murorum* → *Crepis garnieri*) IK 1933, Knobloch 1972, McKenzie 2001, POWO 2025 (the validity of this hybrid is uncertain)
- Crepis capillaris* × *Taraxacum platycarpum* **Crepidinae** Sinoto & Ono 1934, Knobloch 1972, McKenzie 2001 („of doubtful authenticity”)
- Faberia* → see *Mojiangia*
- Hieracium* × *Pilosella* **Hieraciinae** hybridogeneous origin **HY** Fehrer et al. 2007
- Ixeris* × *Youngia* **Crepidinae** (→ × *Ixyoungia* Kitamura 1942 in Acta Phytotax. & Geobot., Kyoto 11: 131) (2 nat. hyb.) IK 1950, Knobloch 1972, Willis 1985, POWO 2025
- Lactuca squarrosa* × *Paraixeris*^o *denticulata* (= *Crepidiastrum*) **IST** **Lactucinae** × **Crepidinae** (nat. hyb., art. hyb.) Ono 1943, Ono & Sakai 1952, Knobloch 1972
- Lactucosonchus*^o *webbii* (= *Sonchus* p. p.) × *Sonchus radicans* **IS** **Hyoseridinae** Kim 2007
- Lapsana* × *Youngia* **Crepidinae** (→ × *Lapsyoungia* Hiyama 1953 in Journ. Jap. Bot. 28: 218) (nat. hyb.: *L. humilis* × *Y. japonica*) IK 1959, Knobloch 1972, POWO 2025
- Leontodon* × *Scorzoneroides* (= *Leontodon* p. p.) **Hypochaeridinae** (→ × *Leontoroides* Dostál 1982 Seznam cévnatých rostlin kvetený československé: 286; = × *Leontoroides* B. Bock 2012 Bull. Soc. Bot. Centre-Ouest 42: 274) (3 nat. hyb.: *L. hispidus* × *S. autumnalis*; *L. hispidus* × *S. pyrenaica*, *L. incanus* × *S. autumnalis*) IPNI 2013, POWO 2025
- Microseris div. spec.* × *Uropappus lindleyi* **Microseridinae** Chambers 1955, Wallace & Jansen 1995 (refer to the assumed hybridogeneous nature of the genus *Stebbinsoseris*^o Wallace & Jansen 1995 HY)
- Mojiangia* **Crepidinae** This is a rare monotypic taxon described by Yin et al. 2021. The authors suppose that this taxon is a successor of the maternal ancestor of *Faberia* which is thought to be a hybridogeneous taxon **HY** **IST** **Crepidinae** × **Lactucinae**
- Picris* × *Sonchus* **IST** **Hypochaeridinae** × **Hyoseridinae** (nat. hyb.: *P. hieracioides* × *Sonchus* spec.) Ono & Sakai 1954
- “*Prenanthes*” (= *Sonchus* p. p.) × *Sventenia*^o (= *Sonchus* p. p.) **IS** **Hyoseridinae** (→ × *Prenanthenia* Sventenius 1960 Addit. Fl. Canar. 1, 89) (nat. hyb.: *P. pendula* × *S. bupleuroides*) IK 1966. POWO 2025 (→ *Sonchus* × *rupicola* IS)
- Sventenia*^o (= *Sonchus* p. p. × *Taekholmia*^o (= *Sonchus* p. p.) **IS** **Hyoseridinae** (→ × *Sonchustenia*^o Sventenius 1960 Addit. Fl. Canar. 1, 87) IK 1966, POWO 2025 (→ *Sonchus* × *ericii*)

Pertyoideae 5: 105. 1 IG.

no subdivision

Ainsliaea 54 (incl. *Diaspananthus*), *Catamixis* 1, *Macroclinidium* 7, *Myriphnois* 1. *Pertya* 32.

Macroclinidium × *Pertya* (→ × *Macropertya* Honda 1937 in Bot. & Zool. 5: 152, cf. Hara 1952, Enum. Spermat. Jap., Pt. 2, 231) IK 1959, Knobloch 1972, Freire 2012 (2 nat. hyb., e. g. *M. robustum* × *P. scandens*), POWO 2025 (→ *Pertya* IS)

Vernonioidae 160: 1932

7 tribes (AP website 2025, some of them formerly part of Cichorioideae)

tribes and subtribes according to Susanna et al. 2020, from en.wikipedia 2025)

Arctotideae,
Eremothameae 2: 3,
Gorterieae 1: 8,
Liabeae 18: 165,
Moquinieae, Platycarpeae, Vernonieae 21 subtribes 140: 1300.

Arctotis × *Venidium*^o (= *Arctotis* p. p.) **IS** **Arctotideae** **Arctotidinae** (→ × *Venidioarctotis* hort.)
(*A. venusta* × *V. fastuosum* = *wyleyi* → *Arctotis* × *hybrida*) Warren 1929, Knobloch 1972,
<http://aggie-horticulture.tamu.edu/syllabi/608/Lists/second%20ed/Arctotisvenusta.pdf> (*A. stoechadifolia* × *V. wylei*) cf. McKenzie 2001, POWO 2025 (→ *Arctotis* IS)

Eremanthus × *Piptolepis* **Vernonieae** **Lychnophorinae** Loeuille 2011 (*E. erythropappus* × *P. ericoides*), Loeuille et al. 2015

Eremanthus × *Paralychnophora* (= *Eremanthus* p. p.) **Vernonieae** **Lychnophorinae** Loeuille 2011 (*E. spec.* × *P. reflexoauriculata*), Loeuille et al. 2015

Paranephelius × *Pseudonosoris* **Liabeae** **Paranepheleinae** hybridogeneous origin **HY** Soejima et al. 2008 („*Pseudonosoris szyszyłowiczii* exhibited intraspecific divergence supporting intergeneric hybridization between *Pseudonosoris* and *Paranephelius* ... The nuclear ribosomal ITS region and the chloroplast trnL-trnF (trnLF) intergenic region were sequenced.“)

References

- Abd El-Twab MH, Kondo K & Hong D (1999) Isolation of a particular chromosome of *Ajania remotipinna* in a chromosome complement of an artificial F1 hybrid of *Dendranthema lavandulifolia* × *Ajania remotipinna* by use of genomic in situ hybridization. *Chromosome Science* 3, 21–28. <http://www.maruzen.co.jp/home-eng/chromosome-contents.html>
- Abd El-Twab MH & Kondo K (2001) Molecular cytogenetic identification of the parental genomes in the intergeneric hybrid between *Leucanthemella linearis* and *Nipponanthemum nipponicum* during meiosis and mitosis. *Caryologia* 54, 109–114.
- Abd El-Twab MH & Kondo K (2006) Fluorescence in situ hybridization and genomic in situ hybridization to identify the parental genomes in the intergeneric hybrid between *Chrysanthemum japonicum* and *Nipponanthemum nipponicum*. *Chrom. Bot.* 2, 19.
- Abd El-Twab MH & Kondo K (2007a) Rapid genome reshuffling induced by allopolyploidy in F1 hybrid in *Chrysanthemum remotipinnum* (formerly *Ajania remotipinna*) and *Chrysanthemum chanetii* (formerly *Dendranthema chanetii*). *Chrom. Bot.* 2, 1–9.
- Abd El-Twab MH & Kondo K (2007b) Identification of parental chromosomes, intra-chromosomal changes and relationship of the artificial intergeneric hybrid between *Chrysanthemum horaimontanum* and *Tanacetum vulgare* by single color and simultaneous bicolor of FISH and GISH. *Chrom. Bot.* 2, 113–119.
- Allan HH (1939) Remarks on × *Leucoraoulia*. *Trans. Royal Soc. New Zealand* 68, 457–461.
- Allan HH (1962) *Flora of New Zealand* Vol. 1. Wellington: Government Printer.
- Anderson LC (1973) Unique *Chrysothamnus* hybridizations in Ash Meadows, Nevada. *Bull. Torrey Bot. Club* 100, 171–177.
- Anderson LC & Reveal JL (1966) *Chrysothamnus bolanderi*, an intergeneric hybrid. *Madrono* 18, 225–233. See also Roberts & Urbatsch 2003, now *Ericameria* IS.
- Baldwin BG, Kyhos DW & Dvorak J (1990) Chloroplast DNA Evolution and Adaptive Radiation in the Hawaiian USA Silversword alliance, Asteraceae Madiinae. *Annals Missouri Bot. Garden* 77 (1), 96–109.
- Baldwin BG, Kyhos DW, Dvorak J & Carr GD (1991) Chloroplast DNA evidence for a North American origin of the Hawaiian silversword alliance (Asteraceae). *Proc. National Acad. Sciences USA* 88, 1840–1843. <http://www.pnas.org/content/88/5/1840.full.pdf>.

- Barrier M, Baldwin BG, Robichaux RH, Purugganan MD (1999) Interspecific hybrid ancestry of a plant adaptive radiation: allopolyploidy of the Hawaiian silversword alliance (Asteraceae) inferred from floral homeotic gene duplication. *Mol. Biol. Evol.* 16, 1105–1113.
- Boase MR, Miller R & Deroles SC (1997) *Chrysanthemum* systematics, genetics, and breeding. *Plant Breeding Reviews* 14, 321–361.
- Bremer K (1996) Major clades and grades of the Asteraceae. In: Hind DJN & Beentje HJ (eds.) *Compositae: Systematics. Proceedings of the International Compositae Conference*, Kew, 1994. Vol. 1, 1–7. Royal Botanic Gardens, Kew.
- Brockie WB (1956) *Helichrysum dimorphum* – species that crosses with *Raoulia*. *New Zealand Gardener* 13 (2), 87–88.
- Bureš P et al. (2024) Intergeneric hybrid origin of the invasive tetraploid *Cirsium vulgare*. *Plant Biol.* <https://doi.org/10.1111/plb.13653>
- Calvo J et al. (2013) A phylogenetic analysis and new delimitation of *Senecio* sect. *Crociseris* (Compositae: Senecioneae), with evidence of intergeneric hybridization. *Taxon* 62, 127–140. <http://www.ingentaconnect.com/content/iapt/tax/2013/00000062/00000001/art00011>
- Carlquist S, Baldwin BG, Carr GD (2003) *Tarweeds and Silverswords*. Missouri Botanical Garden Press, St. Louis.
- Carr GD (1985) Monograph of the Hawaiian USA Madiinae Asteraceae *Argyroxiphium*, *Dubautia* and *Wilkesia*. *Allertonia* 4, 1–121.
- Carr GD (1995) A fully fertile intergeneric hybrid derivative from *Argyroxiphium sandwicense* ssp. *macrocephalum* × *Dubautia menziesii* (Asteraceae) and its relevance to plant evolution in the Hawaiian Islands. *Amer. J. Bot.* 82, 1574–1581.
- Carr GD (2003) Hybridization in Madiinae. In Carlquist S., Baldwin B & Carr GD (eds.) *Tarweeds & Silverswords: Evolution of the Madiinae (Asteraceae)*. Missouri Botanical Garden Press. http://www.botany.hawaii.edu/faculty/carr/book_hybridization.htm
- Carr GD, Baldwin BG & Kyhos DW (1996) Cytogenetic implications of artificial hybrids between the Hawaiian silversword alliance and North American tarweeds (Asteraceae: Heliantheae-Madiinae). *Amer. J. Bot.* 83, 653–660.
- Carr GD & Kyhos DW (1981) Adaptive radiation in the Hawaiian USA silversword alliance Compositae Madiinae I. Cytogenetics of spontaneous hybrids. *Evolution* 35 (3), 543–556. [see also Barrier et al. 1999](#)
- Carr GD & Kyhos DW (1986) Adaptive radiation in the Hawaiian USA silversword alliance Compositae Madiinae II. Cytogenetics of artificial and natural hybrids. *Evolution* 40 (5), 959–976.
- Chambers KL (1955) A biosystematic study of the annual species of *Microseris*. *Contrib. Dudley Herb.* 4, 207–312.
- Chaudhuri BK et al. (1976) Cytogenetics of a cross between two species of annual *Chrysanthemum*. *Cytologia* 41, 111–121. [Glebionis coronaria × Ismelia carinata](#)
- Christov M & Vassilevska-Ivanova RD (1999) Intergeneric hybrids in Compositae (Asteraceae), I. Hybridization between cultivated sunflower *H. annuus* L. and Compositae genera. *Helia* 22, 13–22. [Many unconfirmed intertribal hybrids.](#)
- Clark C (1998) Phylogeny and adaptation in the *Encelia* alliance (Asteraceae: Heliantheae). *Aliso* 17, 89–98.
- Clarkson BD (1988) A natural intergeneric hybrid *Celmisia gracilenta* × *Olearia arborescens* (Compositae) from Mount Tarawera New Zealand. *New Zealand J. Bot.* 26, 325–332. <http://www.tandfonline.com/doi/abs/10.1080/0028825X.1988.10410122>
- Clausen J et al. (1937) *Experimental taxonomy*. Carnegie Institute of Washington, Year Book 36, 209–214.
- Cockayne L & Allan HH (1934) An annotated list of groups of wild hybrids in the New Zealand flora. *Annals of Botany* 48, 1–55.

- Cody ML (1978) Distribution ecology of *Haplopappus* and *Chrysothamnus* in the Mojave Desert. I. Niche position and niche shifts on north-facing granitic slopes. *Amer. J. Botany* 65, 1107–1116.
- Compositae Working Group (CWG) (2025): Global Compositae Database. = **GCB** <https://www.compositae.org/gcd>, doi:10.14284/411
- Crompton N (2021) Die Radiation der Silberschwert-Gruppe (Familie Asteraceae) von Hawaii und die Rolle der Polyploidie. W+W Special Paper B–21–3. https://www.wort-und-wissen.org/wp-content/uploads/b-21-3_silberschwert.pdf. *Asteraceae: Madieae p. p.*
- Crompton N (2022) Die Radiation der Silberschwert-Gruppe. 1. Indizien für präexistente genetische Programme. *Stud. Integrale J.* 29. <https://www.sijournal.de/index2.php?artikel=jg29/heft2/sij292.html>.
- Crompton N (2023) Die Radiation der Silberschwert-Gruppe. 2. Hybriden und die Geschichte der Silberschwerter. *Stud. Integrale J.* 30. <https://www.sijournal.de/index2.php?artikel=jg29/heft2/sij292.html>
- Cronquist A (1947) Revision of the North American species of *Erigeron*, north of Mexico. *Brittonia* 6, 121–302.
- Czerepanov SK (1995) Vascular plants of Russia and adjacent States (the former USSR). Cambridge: Cambridge University Press.
- Deng Y et al. (2009) Production and characterisation of the intergeneric hybrids between *Dendranthema morifolium* and *Artemisia vulgaris* exhibiting enhanced resistance to chrysanthemum aphid (*Macrosiphoniella sanbourni*). *Planta* epub ahead of print.
- Deng Y et al. (2010) Reproductive barriers in the intergeneric hybridization between *Chrysanthemum grandiflorum* (Ramat.) Kitam. and *Ajania przewalskii* Poljak. (*Asteraceae*), *Euphytica* 174, 41–50. <http://www.ingentaconnect.com/content/klu/euph/2010/00000174/00000001/00000113>
- Deng Y et al. (2013) Combination of multiple resistance traits from wild relative species in *Chrysanthemum* via trigenic hybridization. *PLOS ONE* 7 (8).
- Diazgranados M (2012) A nomenclator for the frailejones (*Espeletiinae* Cuatrec., *Asteraceae*). *PhytoKeys* 16: 1–52. http://www.pensoft.net/journal_home_page.php?journal_id=3&page=article&SESID=auzykddds&type=show&article_id=3186 *Espeletia* etc.
- Dittrich M (1981) The genus *Serratula* (*Compositae*). The identity of the Eastern Mediterranean taxa *Rhaponticum pusillum* and *Centauserratula mouterdei*. [*German*] *Candollea* 36, 349–364.
- Drury DG (1972) The cluster and solitary-headed cudweeds native to New Zealand: (*Gnaphalium* section *Euchiton* – *Compositae*). *New Zealand J. of Botany* 10, 112–179.
- Duskova E et al. (2010) Genome size correlates with growth form, habitat and phylogeny in the Andean genus *Lasiocephalus* (*Asteraceae*). *Preslia* 82 (1) 127–148.
- Falvey C (1996) Investigation of three putative intergeneric hybrids in the New Zealand Inuleae (*Compositae*). M.Sc. Thesis. University of Canterbury, Christchurch.
- Faure N et al. (1998) Characterization of interspecific and intergeneric hybrids between cultivated sunflower (*H. annuus* L.) and distant species from *Helianthus* genus and other related genera. Proc. Fourth European Conf. Sunflower Biotechnology. Montpellier, France, October, 20th–23rd. <http://aob.oxfordjournals.org/cgi/content/full/89/1/31>. Only partial hybridization!
- Fehrer J et al. (2007) Incongruent plastid and nuclear DNA phylogenies reveal ancient intergeneric hybridization in *Pilosella* hawkweeds (*Hieracium*, *Cichorieae*, *Asteraceae*). *Molec. Phylogen. Evol.* 42 (2), 347–361. doi: 10.1016/j.ympev.2006.07.004.
- Feng Z-H et al. (2024) Nomenclatural novelties for intergeneric nothotaxa. *Phytoneuron* 2024-85. <https://www.phytoneuron.net/wp-content/uploads/2024/12/85PhytoN-IntergenericNothotaxa.pdf>

- Freire SE (2012) Systematics of the Japanese *Macroclinidium* and \times *Macropertya* (Asteraceae, Pertyoideae, Pertyeae) and their phylogeny inferred from morphology. *Systematic Botany* 37(2), 554–572.
- Funk VA et al. (eds.). Systematics, evolution and biogeography of Compositae. Vienna: International Association for Plant Taxonomy. Retrieved 2016-11-18.
- Furuta H et al. (2004) Production of intergeneric somatic hybrids of *Chrysanthemum* [*Dendranthema* \times *grandiflorum* (Ramat.) Kitamura] and wormwood (*Artemisia sieversiana* J. F. Ehrh. ex Willd.) with rust (*Puccinia horiana* Henning) resistance by electrofusion of protoplasts. *Plant Science* 166, 695–702.
- Geisenheyner L (1890) Ein bigenerischer Bastard (*Anthemis tinctoria* \times *Matricaria inodora*). *Dtsch. Botan. Monatschr.* 8, 10–14.
- Georgieva-Todorova J (1971) Further study of the form obtained after crossing *Helianthus annuus* L. with *Onopordum acanthium* L. *Genetics and Breeding* 4, 396–408.
- Given DR (1984) A taxonomic revision of *Celmisia* subgenus *Pelliculatae* section *Petiolatae* (Compositae-Astereae). *New Zealand Journal of Botany* 22, 139–158.
- Gomez-Martinez M et al. (2010) Embryo rescue of intergeneric hybrids *Helianthus annuus* \times *Tithonia rotundifolia*. [Spanish with English abstract] *Acta Bot. Mexicana* 93, 111–119.
- Harms VL (1965) Cytogenetic evidence supporting the merger of *Heterotheca* and *Chrysopsis* (Compositae). *Brittonia* 17, 11–16.
- Hartman RL & Lane MA (1991) A natural intergeneric hybrid in the $x = 6$ group of the Astereae Asteraceae. *Sida Contributions to Botany* 14, 321–329.
- Heenan P (1993) \times *Celmearia ruawahia* 'Nebulous' – a new intergeneric, collective epithet and cultivar name. *Horticulture in New Zealand* 4, 2–3.
- Heiser CB (1963) Artificial intergeneric hybrids of *Helianthus* and *Viguiera*. *Madrono* 17, 118–127
- Heiser CB Jr. et al. (1969) The North American Sunflower (*Helianthus*). *Mem. Torrey Bot. Club* 22, 3.
- Hong G et al. (2015) Intergeneric hybridization between *Hippolytia kaschgarica* (Krascheninnikov) Poljakov and *Nipponanthemum nipponicum* (Franch. ex Maxim.) Kitam. *Genet. Resour. Crop Evol.* 62, 255–263. <https://doi.org/10.1007/s10722-014-0150-1>
- Hristova-Cherbadzhi M (2020) Intergeneric hybridization of sunflower (*Helianthus annuus* L.) with spiny plumeless thistle (*Carduus acanthoides* L.). *Helia* 43 (72). **not symmetric!**
- Hu L et al. (2021) The natural hybridization between species *Ligularia nelumbifolia* and *Cremanthodium stenoglossum* (Senecioneae, Asteraceae) suggests underdeveloped reproductive isolation and ambiguous intergeneric boundary. *AoB PLANTS* 13, plab012 <https://doi.org/10.1093/aobpla/plab012>
- Jackson RC (1962) Intergeneric hybridization between *Psilactis* and *Machaeranthera*. *Amer. J. Bot.* 49, 676.
- Jackson RC (1966) Some intersectional hybrids and relationships in *Haplopappus*. *Univ. Kansas Sci. Bull.* 46, 475–485.
- Jackson RC (1979) Intersectional hybridization between *Psilactis* and *Machaeranthera*. *Amer. J. Bot.* 49, 157–162.
- Jackson RC (1985) Mitotic instability in *Haplopappus*: structural and genic causes. *Amer. J. Bot.* 72, 1452–1457.
- Jackson RC & Dimas CT (1981) Experimental evidence for systematic placement of the *Haplopappus phyllocephalus* complex (Compositae). *Syst. Bot.* 6, 8–14.
- Jordan TP (1995) The taxonomic status of *Helichrysum purdiei* Petrie. Unpublished BSc (Hons) Thesis. New Zealand: University of Canterbury.
- Kay QON (1971a, b) Biological flora of the British Isles. *Anthemis cotula* L. *Journal of Ecology* 59, 623–636, 637–648.
- Kilian N et al. (general editors) 2009+ (continuously updated): Cichorieae Systematics Portal. – Published at <http://cichorieae.e-taxonomy.net/portal/>

- Kim SC (2007) Mapping unexplored genomes: A genetic linkage map of the woody *Sonchus* alliance (Asteraceae: Sonchinae) in the Macaronesian islands. *J. Heredity* 98 (4), 293–299.
- Kondo K et al. (1999) Fluorescence genomic in situ hybridization identifies reciprocal translocation of somatic chromosomes and origin of extra chromosome by an artificial, intergeneric hybrid between *Dendranthema japonica* and *Tanacetum vulgare*. *Chromosome Science* 3, 15–20.
- Korell M et al. (1996a) Interspecific and intergeneric hybridization in sunflower breeding, I: General breeding aspects. *Plant Breeding Abstracts* 66/7, 925–931.
- Korell M et al. (1996b) Interspecific and intergeneric hybridization in sunflower breeding, II: Specific uses of wild germplasms. *Plant Breeding Abstracts* 66/8, 1081–1091.
- Kyhos DW (1967) Natural hybridization between *Encelia* and *Geraea* (Compositae) and some related experimental investigations. *Madrono* 19, 33–43.
- Kyhos DW, Carr GD & Baldwin BG (1990) Biodiversity and cytogenetics of the tarweeds (Asteraceae: Heliantheae Madiinae). *Ann. Missouri Bot. Garden* 77, 84–95.
- Li WP (2006) Natural hybridization between *Aster ageratoides* var. *scaberulus* and *Kalimeris indica* (Asteraceae): evidence from morphology, karyotype, and ITS sequences. *Bot. Studies* 47 (2), 191–197. <http://ejournal.sinica.edu.tw/bbas/content/2006/2/Bot472-11.pdf>
- Loeuille BFP (2011) Towards a phylogenetic classification of Lychnophorinae (Asteraceae: Vernoniae). Thesis, Univ. Sao Paulo.
- Loeuille B et al. (2015) A phylogenetic analysis of Lychnophorinae (Asteraceae: Vernoniae) based on molecular and morphological data. *Syst. Bot.* 40, 299–315.
- McKenzie, R (2001) Intergeneric hybrids in New Zealand Gnaphalieae (Compositae). Plant and Microbial Sciences, University of Canterbury, Christchurch. <http://hdl.handle.net/10092/4844> www.ir.canterbury.ac.nz/bitstream/10092/4844/1/mckenzie_thesis.pdf
- McKenzie RJ, Ward JM, Lovis JD & Breitwieser I (2004) Morphological evidence for natural intergeneric hybridization in the New Zealand Gnaphalieae (Compositae): *Anaphalioides bellidioides* × *Ewartia sinclairii*. *Bot. J. Linnean Soc.* 145 (1), 59–75.
- McKenzie RJ, Ward JM & Breitwieser I (2008) Hybridization beyond the F-1 generation between the New Zealand endemic everlastings *Anaphalioides bellidioides* and *Ewartia sinclairii* (Asteraceae, Gnaphalieae). *Plant Syst. Evol.* 273 (1–2), 13–24.
- McKenzie RJ et al. (2015) Meiotic behaviour in two natural intergeneric hybrids among New Zealand everlastings (Asteraceae, Gnaphalieae). *New Zealand J. Bot.* 53, 117–123.
- Mitsuoka S & Ehrendorfer F (1972) Cytogenetics and evolution of *Matricaria* and related genera (Asteraceae – Anthemideae) *Österr. Bot. Z.* 120, 155–200.
- Molloy BPJ (1995) Two new species of *Leucogenes* (Inuleae: Asteraceae) from New Zealand, and typification of *L. grandiceps*. *New Zealand J. Bot.* 33, 53–63.
- Morozow V (1947) *Selektia podsolnichnika v SSSR*. Pishtepromizdad. Moskva.
- Muto T et al. (2020) Development of the sequence-characterized amplified region (SCAR) marker for distinction of intergeneric hybrids between *Argyranthemum frutescens* (L.) Sch. Bip. and *Rhodanthemum gayanum* (Cross. & Durieu) B. H. Wilcox, K. Bremer & Humphries. *Plant Biotechnol.* 37, 77–81.
- Nesom GL (1993) Taxonomic infrastructure of *Solidago* and *Oligoneuron* (Asteraceae Astereae) and observations on their phylogenetic position. *Phytologia* 75, 1–44.
- Nesom GL (1994) Hybridization in the tribe Astereae (Asteraceae). *Phytologia* 77, 298–307. <https://www.biodiversitylibrary.org/item/46740#page/3/mode/1up>
- Nesom GL (2001) An anomalous population of *Aster* (Asteraceae, Astereae) sensu lato in Michigan.
- Ning H et al. (2019) Molecular evidence for natural hybridization between *Ligularia nelumbifolia* and *Cremanthodium stenoglossum* (Asteraceae, Senecioneae). *Botany* 97, 53–69.

- Oberprieler C et al. (2022) An updated subtribal classification of Compositae tribe Anthemideae based on extended phylogenetic reconstructions. *Willdenowia* 52, 117–149.
<https://doi.org/10.3372/wi.52.52108>
- Odajima et al. (2004) Evidence of artificial, intergeneric hybrid between *Dendranthema grandiflora* cv. 'Monaco' and *Rhodanthemum hosmariense* by using genomic in situ hybridization. *Chromosome Science* 8, 99–102. <http://nels.nii.ac.jp/els/110004821649.pdf>.
- Ogura H & Kondo K (1998) Application of genomic in situ hybridization to the chromosome complement of the intergeneric hybrid between *Leucanthemella linearis* (Matsum.) Tzvelev and *Nipponanthemum nipponicum* (Franch. et Maxim.) Kitamura. *Chromosome Science* 2, 91–94.
- Ohashi H & Ohashi K (2007) Hybrids in *Crepidiastrum* (Asteraceae). *J. Japanese Botany* 82, 337–347.
- Ohtsuka H & Inaba Z (2008) Intergeneric hybridization of marguerite (*Argyranthemum frutescens*) with annual chrysanthemum (*Glebionis carinatum*) and crown daisy (*G. coronaria*) using ovule culture. *Plant Biotech.* 25 (6), 535–540.
http://warp.da.ndl.go.jp/info:ndljp/pid/260293/www.wdc-jp.biz/pdf_store/jspcmb/pdf/pb25_6/25_535.pdf.
- Olorode O & Torres MA (1970) Artificial hybridization of the genera *Zinnia* (sect. *Mendezia*) and *Tragoceras* (Compositae – Zinniinae). *Brittonia* 22, 359–369.
- Ono H (1943) Intergeneric hybridization in Cichorieae, VI. A hybrid of *Paraixeris denticulata* and *Lactuca squarrosa*. *Cytologia* 13, 61–72.
- Ono H (1955) Intergeneric hybridization in Cichorieae. *Japanese Journal of Genetics* 30, 269–274.
- Ono H & Sakai B (1952) Intergeneric hybridization in Cichorieae, XI. On the diminution of the chromosome number in the F₁ hybrid of *Paraixeris denticulata* and *Lactuca squarrosa*. *Cytologia* 17, 97–103.
- Ono H & Sakai B (1954) A natural hybrid of *Sonchus* sp. and *Picris hieracioides*. *Japanese Journal of Genetics* 29, 170 (abstract only).
- Orchard AE (2009) A revision of *Cassinia* (Asteraceae: Gnaphalieae) in Australia. 6. Section *Cassinia*. *Austral. Syst. Bot.* 22 (5), 344–376.
- Orndurff R & Bohm BA (1975) Relationships of *Tracyina* and *Rigiopappus*. *Modrono* 23, 53–55.
- Payne WP (1964) A re-evaluation of the genus *Ambrosia* (Compositae). *J. Arnold. Arbor.* 45 (4), 401–430.
- Powell AM (1972) Artificial hybridizations in the subtribe Peritylinae (Compositae-Helenieae). *Amer. J. Bot.* 59, 760–768.
- Powell AM (1978) Systematics of *Flaveria* (Flaveriinae-Asteraceae). *Annals Missouri Bot. Garden* 65, 590–636. *Flaveria* × *Haploesthes*, *Flaveria* × *Sartwellia*.
- Powell AM (1985) Crossing data as generic criteria in the Asteraceae. *Taxon* 34 (1), 55–60.
- Qi X et al. (2018) Genomic and transcriptomic alterations following intergeneric hybridization and polyploidization in the *Chrysanthemum nankingense* × *Tanacetum vulgare* hybrid and allopolyploid (Asteraceae). *Hort. Res.* 5, Article. 5.
- Rabakonandrianina E & Carr GD (1981) Intergeneric hybridization, induced polyploidy, and the origin of the Hawaiian endemic *Lipochaete* from *Wedelia* (Compositae). *Amer. J. Bot.* 68, 206–215. now *Lipochaete* × *Wollastonia*
- Rejzková E et al. (2009) Polyploid evolution and hybridization in the Andean genus *Lasiocephalus* (Asteraceae) – Insights from genome size data. ICPHB Poster Sessions. Int. Conf. Polyploidy, Hybridization and Biodiversity. 2009. Saint Malo – France
www.icphb2009.univ-rennes1.fr/, http://www.icphb2009.univ-rennes1.fr/e107_files/downloads/ICPHB2009_Part_2.pdf
- Ribeiro et al. (2025) Molecular phylogenetics suggest *Osmiopsis* (Asteraceae) is a rare inter-subtribal hybrid genus on Hispaniola. doi:10.21203/rs.3.rs-6938723/v1 [Eupatorieae](#)

- Roberts RP & Urbatsch LE (2003) Molecular phylogeny of *Ericameria* (Asteraceae, Astereae) based on nuclear ribosomal 3' ETS and ITS sequence data. *Taxon* 52 (2), 209–228. [See also Anderson 1973, Anderson & Reveal 1966](#)
- Saito Y et al. (2006) Molecular evidence for repeated hybridization events involved in the origin of the genus \times *Crepidiastrixeris* (Asteraceae) using RAPDs and ITS data. *Bot. J. Linnean Soc.* 151, 333–343.
- Schilling EE (2011) Hybrid genera in Liatrinae (Asteraceae: Eupatorieae). *Mol. Phylogenetics and Evolution* 59, 158–167.
- Schilling EE et al. (2008) Molecular analysis of *Solidaster* cv. Lemore, a hybrid goldenrod (Asteraceae). *J. Bot. Research Institute of Texas* 2, 7–18.
- Shaw JMH (2015) Nomenclatural notes on horticultural hybrids: *Dahlia* 'Mexican Black', *Potentilla* and other Rosaceae, *Stylophorum*, and *Tigridia*. *Phytoneuron* 2015–53, 1–5.
- Smitsen RD et al. (2007) Genetic characterization of hybridization between the New Zealand everlasting *Helichrysum lanceolatum* and *Anaphalioides bellidioides* (Asteraceae: Gnaphalieae). *Bot. J. Linnean Society* 154 (1), 89–98.
- Smitsen RD et al. (2015) DNA sequence analysis confirms the identity of the intergeneric hybrid *Argyrotegium mackayi \times *Leucogenes leontopodium* (Asteraceae: Gnaphalieae). *New Zealand J. Bot.* 53, 210–215.*
- Smitsen RD et al. (2020) A revised subtribal classification of Gnaphalieae (Asteraceae). *Taxon* 69. doi:10.1002/tax.12294
- Soejima A et al. (2008) Phylogeny and putative hybridization in the subtribe Paranepheleinae (Liabeae, Asteraceae), implications for classification, biogeography, and Andean orogeny. *J. Syst. Evol.* 46 (3), 375–390. <http://www.jse.ac.cn/wenzhang/jse08065.pdf>
- Stace CA (ed.) (1975) Hybridization and the flora of the British Isles. Academic Press, London.
- Stucky J (1978) Hybridization between *Aster* and *Machaeranthera* and its taxonomic significance. *Amer. J. Bot.* 65, 125–133.
- Susanna A et al. (2020) The classification of the Compositae: A tribute to Vicki Ann Funk (1947–2019). *Taxon* 69, 807–814. <https://doi.org/10.1002/tax.12235>
- Sventenius ERS (1960) Additamentum ad floram canariensem. I. *Inst. Nac. Invest. Agronom., Minist. Agricult. Madrid.* 95 pp.
- Tang F et al. (2009) Intergeneric hybridization and relationship of genera within the tribe Anthemideae Cass. (I. *Dendranthema crassum* (Kitam.) Kitam. \times *Crossostephium chinense* (L.) Makino). *Euphytica* 169 (1), 133–140. <http://www.springerlink.com/content/1346423006292138/>
- Tang F et al. (2010) Molecular cytogenetic identification and relationship of the artificial intergeneric hybrid between *Dendranthema indica* and *Crossostephium chinense* by GISH. *Plant Syst. Evol.* 289 (1–2), 91–99.
- Tang F et al. (2011) Intergeneric hybridization between *Dendranthema nankingense* and *Tanacetum vulgare*. *Scientia Horticulturae* 132, 1–6.
- Tang F et al. (2012) First intergeneric hybrids within the tribe Anthemideae Cass. III. *Chrysanthemum indicum* (L.) Des Moul. \times *Opisthopappus taihangensis* (Ling) Shih. *Biochemical Systematics and Ecology* 43, 87–92. [Ovule rescue](#)
- Tara M (1973) Cytogenetic studies on natural intergeneric hybridization in *Aster* alliances part 2. *Heteropappus hispidus $2n = 36$, *Kalimeris incisa $2n = 72$. *J. Science Hiroshima University Series B Div. 2 (Botany)* 14 (3), 107–140.**
- Tara M (1977) Cytogenetic studies on natural intergeneric hybridization in *Aster* alliances part 4. Experimental confirmation of the hybrid origin of *Aster ageratoides* ssp. *ovatus*. *Botanical Magazine –Tokyo* 90 (1020), 253–258.
- Tara M (1978) Cytogenetic studies on natural intergeneric hybridization in *Aster* alliances. Part 6. Confirmation of the amphidiploid origin of the 12 ploid one of the offspring of the natural F-1 hybrid *Aster ageratoides* ssp. *ovatus \times *Kalimeris incisa* sexual hybrid. *Botanical Magazine-Tokyo* 91 (1024), 227–234.*

- Turner BL & Sanderson S (1971) Natural hybridization between the Compositae „genera“ *Machaeranthera* and *Haplopappus* (sect. *Blepharodon*). *Amer. J. Bot.* 58, 467.
- Vassilevska-Ivanova R (2005) A short-cycle sunflower line derived from intergeneric hybridization *Helianthus* × *Verbesina*. *Helia* 28 (43), 55–59.
<http://www.doiserbia.nb.rs/img/doi/1018-1806/2005/1018-18060543055V.pdf>
- Vassilevska-Ivanova RD, Christov M & Lidansky T (1996) A new type of flowers in sunflower inflorescence by crosses between *Helianthus annuus* L. and *Verbesina helianthoides* Michaux. *Comptes Rendus Academie Bulgare des Sciences* 49, 91–92.
- Vassilevska-Ivanova R & Naidenova N (2005) Intergeneric hybridization between cultivated sunflower and Asteraceae genera: *Helianthus annuus* × *Echinacea purpurea*. *Comptes Rendus Academie Bulgare des Sciences* 58, 729–734.
- Vassilevska-Ivanova R & Tcekova Z (2002) An attempt for hybridization *Helianthus* × *Verbesina*. *Comptes Rendus Academie Bulgare des Sciences* 55, 99–104.
- Vassilevska-Ivanova RD, Tcekova Z & Lidansky T (1999) Intergeneric hybridization of cultivated sunflower *Helianthus annuus* L. with *Tithonia rotundifolia* Blake. *Comptes Rendus Academie Bulgare des Sciences* 52, 93–96.
- Vassilevska-Ivanova R et al. G (2013/2014) Utilization of related wild species (*Echinacea purpurea*) for genetic enhancement of cultivated sunflower (*Helianthus annuus* L.). *Turk. J. Agric. For.* 38, 15–22. <https://doi.org/10.3906/TAR-1210-91>
- Vassilevska-Ivanova RD et al. (2015) An intergeneric sunflower line produced after cross *Helianthus annuus* × *Echinacea purpurea*. *Genetic Resources and Crop Evolution* 62, 829–836.
- Wallace RS & Jansen RK (1995) DNA evidence for multiple origins of intergeneric allopolyploids in annual *Microseris* (Asteraceae). *Plant Syst. Evol.* 198, 253–265.
- Wang H et al. (2014) Rapid genetic and epigenetic alternations under intergeneric genomic shock in newly synthesized *Chrysanthemum morifolium* × *Leucanthemum paludosum* hybrids (Asteraceae). *Genome Biol. Evol.* 6(1), 247–259.
- Ward JM & Breitwieser I (2001) Intergeneric hybrids in New Zealand Gnaphalieae (Compositae). <http://www.2001.botanyconference.org/section12/abstracts/34.shtml> see also Breitwieser & Ward.
- Warren E (1929) On a natural hybrid between the genera *Venidium* and *Arctotis*. *Annals of the Natal Museum* 6, 171–217.
- Warwick SI & Sweet (1983) The Biology of Canadian weeds. 58. *Gatinsoga parviflora* and *G. quadriradiata* (= *G. ciliatu*). *Can. J. Plant Sci.*
<https://cdnsiencepub.com/doi/pdf/10.4141/cjps83-087>
- Watson LE et al. (2020) Phylogenomics of the hyperdiverse daisy tribes: Anthemideae, Astereae, Calenduleae, Gnaphalieae, and Senecioneae. <https://doi.org/10.1111/jse.12698>
- Wu X et al. (2015) Possible intergeneric hybridization between *Cancrinia maximowiczii* C. Winkl. and *Chrysanthemum naktongense* (Nakai) Tzvel. × *C. morifolium* Ramat. 'Aifen'. *Genetic Resources and Crop Evolution* 62, 293–301. [results of flow cytometry analysis and chromosome counting did not support the nature of the putative hybrids](#)
- Xiang C & Semple JC (1994) Molecular systematic study of *Aster* sensu lato and related genera (Asteraceae: Astereae) based on chloroplast DNA restriction site analyses and mainly North American taxa. p. 393–423 in: Hind DJN & Beentje HJ (Eds) *Compositae: Systematics*. Proc. Int. Compositae Conference, Kew. Kew: Royal Botanical Garden.
- Yang D et al. (2010) Intergeneric hybridizations between *Opisthopappus taihangensis* and *Chrysanthemum lavandulifolium*. *Scientia Horticulturae* 125 (4), 718–723.
- Yeo PF (1971) *Solidaster* – an intergeneric hybrid (Compositae). *Baileya* 18, 27–32. [but see Nesom 1993!](#)
- Yin Z-J et al. (2021) *Mojiangia oreophila* (Crepidinae, Cichorieae, Asteraceae), a new species and genus from Mojiang County, SW Yunnan, China, and putative successor of the maternal *Faberia* ancestor. *Plant Diversity* 44, 83–93. <https://doi.org/10.1016/j.pld.2021.06.007>

- Zhao HB et al. (2007) Intergeneric hybrid of *Dendranthema* × *grandiflorum* 'Aoyunhuoju' and *Ajania pacifica* and its taxonomic implications. *Acta Phytotax. Sinica* 45 (5), 661–669.
- Zheng Y et al. (2013) Intergeneric hybridization between *Elachanthemum intricatum* (Franch.) Ling & Ling and *Opisthopappus taihangensis* (Y. Ling) C. Shih. *Genetic Resources and Crop Evolution* 60 (2), 473–482.
- Zhu W et al. (2013) Intergeneric hybrid between *Chrysanthemum* × *morifolium* and *Artemisia japonica* achieved via embryo rescue shows salt tolerance. *Euphytica* 191 (1), 109–119.
<https://doi.org/10.1007/s10681-013-0869-3>
- Zhu W et al. (2014) Intergeneric hybrids between *Chrysanthemum morifolium* 'Nannongxiaoli' and *Artemisia vulgaris* 'Variegata' show enhanced resistance against both aphids and *Alternaria* leaf spot. *Euphytica* 197, 399–408.